

Scroll

Temple Beth Shalom - Needham, Massachusetts

January 2015

Tevet/Shevat 5775



TBS In Israel: A Traveler's Diary

Page 5

Learning Hebrew Through Movement

Page 12

Musings on a Minyan

Page 8



Volume 42, Issue 5

IN THIS ISSUE

A Platform for Leadership	4
Israel in Focus	5
Announcements	6
Feature Story	8
Events	10
Education	12
Kids Page	13
Learning	14
Save the Date	16
B'nei Mitzvah	18
Chai Lights	19
Spotlight: TBS Brotherhood	20
Contributions	21
Yahrzeits	23
Support our Advertisers	24

EDITORIAL BOARD

Daniel Barkowitz
Michael Goff
Peter Mesnik
Alan Novick
Matt Robinson
Ed Shems
Steven Sherry

Advertising: **Roberta Gerson**

To join the Scroll Editorial Board, or to contribute content, please email: scroll@tbsneedham.org

From the Editorial Board

New Beginnings

As we welcome the new year we reflect back on the year past, and perhaps, all of our years past.

Some of us make resolutions for the new year; contracts with ourselves, promises to loved ones, and perhaps, covenants with the G-d of our understanding. Each of these “resolutions” is a commitment we make to change ourselves, hopefully for the better. For some of us these “resolutions” are gateways to *new beginnings*.

In this edition of the Scroll, we take a look at some of the ways members of our community have made new beginnings: setting off on journeys of discovery, exploring the world around them, and the world within. We also consider how we, as a community are remaking our temple home, embarking on a new beginning for ourselves and for those who will follow.

As you read these stories of your people and of your community, consider the “*new beginnings*” that have marked the course of your own personal journey, and how as part of our Beth Shalom community you are a part of our collective, communal new beginning.

L’shana Tova!

The Editorial Board



Drawing Courtesy Ed Shems

From the Clergy

A New Chapter

By Rabbi Jay Perlman



Late December and early January mark a season of emerging light and of new beginnings in many faith traditions. The increased progression of the Chanukah candles, for example, reflects a crescendo of hope that tomorrow's light will be even brighter than today's. In a world that is so often filled with challenges and questions, we are taught that one of the most essential sources of this light is a healthy connection to our temple community.

Connecting with Your Congregation

As our rabbis wrote eighteen hundred years ago, "One should always be part of the Jewish community." For it is here – they noted - that we find some of the most essential resources of the heart, mind, and spirit. Those of us whose lives have been touched by our community know this well. Connections with congregations offer us direction and guidance – both through the wisdom of Jewish teachings and through the wisdom of other members of our communities.

Connections with congregations offer us a profound source of strength, hope, and stability when the unexpected happens. Connections with congregations link our lives and our families to something greater than ourselves – a people and a history, a community of friends and neighbors whose values match our own, a rich and beautiful tradition of music, holy days, foods, and stories, and a shared sense of responsibility to each other, to our society, and to our world.

Sixty Years of Vision, Hope, and Love

As we step into 2015, we recognize that the growing light of our TBS community is inspired by sixty years of vision, hope, and love. Indeed, from the very beginning, the entire reason for Beth Shalom's being has been to bring blessing. In our community, a day doesn't go by when life moments aren't celebrated, new friendships aren't made, learning is not taking place, and when help is not offered. Whether we are at the Temple regularly, occasionally, or are more

Continued on Page 7

JANUARY 2015

SERVICES

FRIDAY, JANUARY 2 (12 TEVET 5775)

7:15 PM – *Shabbat* Contemplative Prayer *Shabbat* Service
7:15 PM – *Shabbat* Evening Service

SATURDAY, JANUARY 3 (12 TEVET 5775)

Torah: VaYechi, Gen. 47:28 – 50:26
8:30 AM *Shabbat* Morning *Minyan*
9:00 AM – *Torah* Study
11:00 AM – *Shabbat* Morning Service
Bat Mitzvah: Samantha Owen

FRIDAY, JANUARY 9 (19 TEVET 5775)

6:15 PM – Tot *Shabbat*
7:15 PM – *Simchat Shabbat* Service

SATURDAY, JANUARY 10 (19 TEVET 5775)

Torah: *Shmot*, Ex. 1:1 – 6:1
8:30 AM *Shabbat* Morning *Minyan*
9:00 AM – *Torah* Study
11:00 AM – *Shabbat* Morning Service
Bat Mitzvah: Samantha Sugarman

FRIDAY, JANUARY 16 (26 TEVET 5775)

6:15 PM – *Shabbat* Evening Service

SATURDAY, JANUARY 17 (26 TEVET 5775)

Torah: VaEra, Ex. 6:2 – 9:35
8:30 AM *Shabbat* Morning *Minyan*
9:00 AM – *Torah* Study
11:00 AM – *Shabbat* Morning Service

FRIDAY, JANUARY 23 (4 SHEVAT 5775)

6:15 PM – *Shabbat* Evening Service

SATURDAY, JANUARY 24 (4 SHEVAT 5775)

Torah: Bo, Ex. 10:1 – 13:16
8:30 AM *Shabbat* Morning *Minyan*
9:00 AM – *Torah* Study
11:00 AM – *Shabbat* Morning Service
B'nei Mitzvah: Benjamin and Samara Fruman

FRIDAY, JANUARY 30 (11 SHEVAT 5775)

6:15 PM – *Shabbat* Evening Service

SATURDAY, JANUARY 31 (11 SHEVAT 5775)

Torah: B'shalach, Ex. 13:17 – 17:16
8:30 AM – *Shabbat* Morning *Minyan*
9:00 AM – *Torah* Study
11:00 AM – *Shabbat* Morning Service
Bat Mitzvah: Anna McConchie

From the President

A Platform for Leadership

By Ed Zeval

As we move into the new year 2015, the month of January leads the way. And my thoughts turn to leadership....

Scores of Dedicated Members

When we think of lay leadership at the Temple, what comes to mind? To me, it is the scores of dedicated members of our congregation who devote so much of their spare time and energy (what precious little there is these days!) to bringing our special community ever closer together, to helping us draw vital connections, to enriching our congregational life, and to allowing us to fully express our Jewish identity. *It is their work that has given us outlets for embracing the values of tzedakah, of caring, of Jewish learning, of brotherhood, sisterhood, and social justice.* We need only open the Calendar on the Temple's website or peruse the Events section of the Scroll to see the incredible results of all these hands. But what, from an organizational viewpoint, is the framing for such a wondrous canvas? What is the platform of governance that accommodates all these amazing efforts?

A Devoted Board

We can begin with our Board. Made up of 18 trustees, it consists of a President, an Executive Vice President, a Treasurer (who is also the Vice President of Finance) a Secretary, six Vice Presidents and eight at-large trustees. Helping the Board are an Assistant Treasurer, Financial Secretary, General Counsel and Human Resources Adviser. All are *devoted congregants*, entrusted to oversee temple life and the well-being of our community.

Seven Circles of Governance

Our Bylaws create seven areas (think of them as circles) of governance that support both the TBS mission as well as its operational needs. They are (in alphabetical order): Administration, Caring Community, Early Childhood Learning, Finance, Learning, Religious and Cultural Practices, and *Tikkun Olam* (Repairing the World).

It is within each of these circles that we find our numerous committees and arms, assigned together

by common nature or function. For example, the Caring Community circle contains *Chesed*, 3 Score and More, Member Relations, Garden Club, Sisterhood, and Brotherhood. The Learning circle contains Elementary Learning, Adult Learning, Teen Engagement and BESTY.



The Backbone of Our Activities

Each VP and at-large trustee works within one of these circles, serving as a guide and liaison to the committee chairs and arm presidents. A member of our clergy or senior staff also works in partnership with each circle to provide critical staff connection and experience. For special projects, a small task force may be created.

Together with our clergy and staff, these lay-led committees, arms, and task forces form the very backbone of our activities. Each is headed by a chair (or an arm president) who oversees its goals and activities. Of course, all of these groups are made up of a robust membership of congregants, reflecting an incredibly broad demographic, who plan and carry out these vital pathways of connection.

Our forum for lay leadership is the **TBS Leadership Council**. It includes all of our trustees, committee chairs, arm presidents, senior staff, and past TBS Presidents. Meeting periodically, it provides an essential voice on key issues of Jewish and congregational life while also advising the Board on long-term objectives.

Our lay leaders work constantly, engaging our membership, nurturing our relationships as a Jewish community, building our future home, and maintaining the well-being of a healthy and vibrant congregation.

To all of our lay leaders, members of our committees, arms, and task forces, on behalf of myself and our entire membership, I extend my deepest thanks for your caring and commitment.

“TBS In Israel” - A Traveler’s Diary

by Amy Willis

December 3, 2014:

My family and I are preparing to travel to Israel with Rabbi Jay and Emily and over 70 other members of the TBS family. While I have dreamy memories of the five weeks I spent in Israel in 1987, that seems like an awfully long time ago. The upcoming trip, with my husband Ken and children Juliana and Daniel seems, at this point, like a great adventure into the unknown.

Right now my thoughts are full of logistics: passports are ready to go; new suitcases and carry-on bag were purchased after much deliberation; the kids still need new sneakers; outfits for Shabbat; thirteen pairs of socks each; don’t forget the videos for the plane or Daniel’s stuffed monkeys. Twelve hours in the air - really?

I am reminded of another time in my life when I was consumed by details. During the months I was pregnant with Juliana, Ken and I spent our weekends roaming through Babies ‘R’ Us in search of the perfect crib, sheets, changing table, car seat, stroller, and more. Should we buy a white crib or wood toned? The Graco car seat or the Britax? Teddy bear sheets or bunnies?

It wasn’t until Ken and I held our newborn baby

and began our life as parents that I realized all the “stuff” we had chosen with care mattered little. The overwhelming love we felt for Juliana was so much more important - it was sacred, monumental, indescribable. My hope - and my expectation - for this trip is that once we land in Israel, my preparations, packing list and concerns will float away among gentle clouds at the Tel Aviv airport. My head will give way to my heart.

Like I did years ago, I yearn to once again feel awed and inspired at the Western Wall and Masada, to munch on crunchy falafel, and to meet wonderful Israelis, this time not as a 22-year old college grad, but as a wife, mother and member of a cherished community of friends. And I hope my family will feel the same love and connection to Israel that I have carried around inside of me since my first visit.

Friends who have gone on the TBS trip before us have described it as “the best thing we have ever done.” Indeed, if the warmth and magic Rabbi Jay and Emily bring to everyday life at TBS is any indication, we are in for an amazing twelve days. Stay tuned.

Amy will describe her family’s experience in Israel in the February Scroll.



Mixed Media

Artist: Nancy Perkins

The multi media canvas mural that adorns our main lobby was created after the TBS trip to Israel four years ago by Nancy Perkins. After collecting photos taken during the trip, Nancy printed them on tracing paper, then created a layer effect with acrylic paint, glazes and stamps. She also hand painted many elements, making this piece a unique labor of love.

ANNOUNCEMENTS

Looking for a Few Good Souls

Please join the new TBS Evening *Minyan* every Monday-Thursday at 6:45 PM.

At this half-hour service, we will gather to pray, share, and support each other.

There will also be a new *Minyan* meeting on Sunday mornings at 8:45 AM.

So whether you need to say *Kaddish*, want to offer a prayer for healing for a loved one, or are looking for an opportunity for some reflection and time with friends, we hope that you will participate and contribute to this meaningful and *mitzvah*-ful endeavor. The commitment is small, but the rewards are eternal!

For more information, please contact Steve Peljovich at steven.peljovich@gmail.com.

To sign up for a particular evening, please go to <http://bit.ly/tbs-pm-minyan>.

The Investment Committee

The TBS Investment Committee is charged with oversight of the Temple's Educational and General Endowment Funds. The management of these two endowments was recently moved to the CJP Endowment Pool "JCEP" which manages funds for many temples, Jewish Federations nationally, donor advised funds and other charitable organizations.

The committee was chaired for many years by Phil Aronson and overseen by a small group of temple members including the Treasurer and investment professionals. Today, the committee includes myself, Daniel Barkowitz, Jeff Shapiro, and Ethan Freishtat. In the past two years, the Committee updated the Endowment's Investment Policy Statement (IPS) which sets forth the goals, time frame, risk parameters, measurement tools and responsible parties for the endowment. The Temple Board must approve any changes to the IPS and must also be provided a performance summary at least annually.

In addition to endowment oversight, the Committee is exploring ways to leverage the talents within the temple community to educate members on other investment topics that might be of interest. The

Committee also plans to meet with the leadership of the Temple's K-12 learning programs to consider opportunities to provide educational materials/programs in the future. If you would like to get involved or have ideas for the investment committee to consider, please contact Elliot Herman (Elliot.herman@comcast.net).

The Endowment

The temple's investment committee's main responsibility is the prudent oversight of the temple endowment. New or old member, you may not be aware that an endowment even exists. The following is a short update on the current state of the endowment.

An educational endowment and general endowment fund were established a number of years ago for the ongoing support of the temple. Under the guidance of the investment committee, the endowment funds were managed by a national brokerage firm with a fairly conservative investment mandate. The endowment has grown at a respectable rate for the risk taken and met expectations. Total combined assets are approximately \$660,000.

Last Spring, the temple board accepted the recommendation of the investment and finance committees to transfer management of the endowment funds to the Jewish Community Endowment Pool, LLP (JCEP) effective July 1, 2014. JCEP was founded by CJP in 1998 to serve the Jewish Community. The fund is managed by a full-time Chief Investment Officer and a three person investment professional staff. It is overseen by well-known investors including Seth Klarman of the Baupost Group in Boston and Dan Jick of High Vista Strategies. The Fund has over \$1 Billion (part of a \$2.6 Billion Caregroup/CJP collaborative) under management and invests in a diversified mix of public and private equity and fixed income investments. Its objective is to achieve long-term competitive results with a focus on downside protection. The investment committee reviews and reports to the Temple Board on JCEP's Performance.

The fund is utilized by temples and other charitable entities both in the Boston area and nationwide. The Temple opted to join the fund as a way to provide a high level of investment management expertise and diversification as well as a means to provide continuity for the lay led investment committee.

ANNOUNCEMENTS

Endowments play an important role in the fabric of non-profit organizations. Normally, endowments seek to build up enough resources to allow for the organization to fulfill a portion of operational needs annually from the endowment earnings. Secondly, endowments are designed to provide future growth in perpetuity. As the temple grows, we are mindful of the need to grow the endowment and are confident that the recent management move is a step in that direction. Growth of the endowment will be critical to the long-term success of the Temple.

If you have any questions, please feel free to contact Elliot Herman at (617) 745-0903 or eherman@prw-wealthmanagement.com.

Bounty of Socks Goes to Circle of Hope

A week before Channukah, TBS sisterhood collected wool socks and underwear for Circle of Hope (CoH). Many of the donations will be distributed to the men who lost their safe haven when the Long Island Shelter closed last month.

CoH Director Barbara Waterhouse wrote to the group, thanking them for their generous efforts. "I am thrilled that Temple Beth Shalom Sisterhood donated such a tremendous bounty of such desperately needed men's items," she wrote. "You have lifted my spirits and touched my heart! How generous and wonderful of everyone who participated! Thank you for your extraordinary kindness and thoughtful donations. The men need these items now more than ever before."

If you would like to support CoH, please go to <http://www.circleofhopeonline.org>.



"A New Chapter", Continued from Page 3

aware of what is happening in our community from a distance, it is hard not to feel proud of both the good that is being done and the abiding dedication to doing even more to positively impact the lives of others.

As we know, our congregation's deep commitment to *Mikdash* – the building and extensive renovation that will make our new temple home possible – is grounded in our desire to continue to be such a source of light into the years ahead. We are well on our way towards reaching the goal set by our Community Campaign. Thank you to the many who have already generously stepped forward in sacred partnership to make this happen! It is our hope that 100% of our community shares in whatever way they are able.

Our Senior Rabbinic Partnership

Yet another exciting community commitment was made about a year ago to help ensure a vibrant present and future for TBS. **Rabbi Todd was invited by our congregation to ascend to the position of Senior Rabbi of Temple Beth Shalom** – creating a senior rabbinic partnership that I continue to cherish every day! As we look forward to the many wonderful moments that 2015 will certainly bring, I ask you to save the date of: **Friday evening, March 20th**. On that night – at Shabbat services – our community will celebrate **Rabbi Todd's "Aliyah L'Rabbanut"** – **"Ascent to New Rabbinic Leadership"** with a very special ritual and post-service oneg! Plans are being made now and more details will be shared in the coming weeks.

During this season of radiance and of new beginnings built upon strong foundations, Emily, Liana, Jonah and I feel especially blessed to be part this community. Thank you for the light that each of you brings and may 2015 be a year filled with good health and much happiness for you and those that you love.

Have an announcement? Submit it to the Scroll: <http://www.tfaforms.com/349526>

Musings on a Minyan

As the Temple community prepares to welcome (and be welcomed by) a new evening *Minyan*, we asked a pair of our many *Minyan* Mavens, David Berg and Steve Staum, to offer recollections and thoughts on the meaning of this most meaningful meeting group.

All it Takes is One

By David Berg

It may come as a surprise to some, but morning *minyan* (which is offered Monday and Thursday mornings at 7 AM) is one of the longest continuously run prayer services conducted at Temple Beth Shalom.

Over 20 years ago, at a Torah study, the idea of having weekday services was brought up. After several discussions, it was decided to start with services on Monday and Thursday mornings (the days when *Torah* is traditionally read) as a way of providing additional opportunities to fulfill the *mitzvot* of prayer and of reciting *kaddish*.

Following the advice of Rabbi Sonsino, it was further decided that the service would be lay led and should not be any longer than 30 minutes. Using the prayer book “Gates of Prayer” (which was the primary *siddur* for the Congregation at the time), we reviewed with Rabbi Sonsino what constitutes a Jewish prayer and verified that what we were proposing met that standard.

At that time in the Temple’s history, Festival services were held at 10 or 10:30 in the morning, at which time the *Yizkor* prayers were recited. To accommodate those members who did not or could not take that time away from work, the same core group of weekday *daveners* conducted a Festival service.

Over the years, the attendance at the morning *minyan*

has varied, but regardless of the number of attendees, there has always been a service.

The *minyan* has become an open *havurah*, welcoming all who come to pray, whether they are members or not. Everyone is invited to lead the service and to participate at their own pace, and in their own fashion.

The following are quotes from various participants:

“I started going to the morning *minyan* to say *kaddish* for my father and found a welcoming group of people. On Monday and Thursday, every member stands with me and there is community. The leader waits if a regular is late. The portion of *Torah* is food for thought. The sick get a *misheberach* and the departed are remembered.”

“There are closer temples to my home and *minyans* that *daven* faster and others with more people. Saying prayers for my father is one of the most difficult things I’ve had to do. This temple makes me feel comfortable.”

“I first came to the morning *minyan* immediately after my mom passed away as I thought I would find some comfort and solace. That was...15 years ago. Everyone was welcoming and sympathetic as they are today when someone new comes to say *kaddish*. When I come each Monday and Thursday morning, it gives me special time to think of both my parents who have passed away.... Also, you become part of a cohesive group that is friendly and interesting.”



FEATURE STORY (CONTINUED)

“One early evening, nearly two decades ago, I answered a telephone call from a friend, telling me that a TBS member had called him about his desire to recite the *kaddish* prayer early the next morning and needed a *minyan*. My first thought was, “Wow what an easy way to earn a *mitzvah*!” Asked if I could bring along other attendees, I volunteered my wife and our wonderful son-in-law. The next morning, the three of us joined a small, warm and friendly group of Temple community members.... And so began an extraordinary and rewarding spiritual experience. The three of us are very grateful to have been blessed with health and the ability to continue our devotion to our Temple’s great weekday morning activity- It’s a very special and precious two weekday morning half hours of delight and spiritual uplifting. We are ever grateful of having been bestowed the *kavod* and *zazchut* to be a part of this extraordinary opportunity of warm camaraderie. We pray that God will grant us the good fortune to continue attending the weekday morning *minyans* with both current as well as new friends.”

“I stagger in trying to wake up. At the end I am ready for the day!” Please join us!

Shiva Minyan: The Ultimate Mitzvah

By Stephen Staum

We perform many *mitzvahs* at Temple Beth Shalom, including caring for others, helping our community and preserving the environment. However, few provide an opportunity for satisfaction greater than leading a *shiva minyan*. As a *shiva minyan* leader,

you have the responsibility and the honor of providing comfort and support to friends and fellow community members who are grieving the loss of a loved one.

I cannot fully describe the warm glow I walk away with each time I perform this *mitzvah*! Even congregants who are admittedly not very observant are moved and comforted by the familiar prayers and melodies recited in this short service. Many express their gratitude with heartfelt praise. Our leaders really do receive more than they give!

Contrary to popular belief, an extensive knowledge of Hebrew is not necessary. The leader may choose to read any prayers in English, at their option. Tutoring and guidance is available from our rabbis and experienced leaders. Also, all “rookie” leaders are invited and encouraged to accompany a more experienced leader until they are comfortable leading on their own.

The only standing commitment we ask is that you check your e-mails daily and let us know whether or not you are available for a given evening. Most *shiva minyans* are conducted in the evening around 7 PM. Since our custom requires prompt burials, we usually only have one or two days lead time for *minyans*. Hence, we have the need for many participants to avoid lapses in service to our congregants.

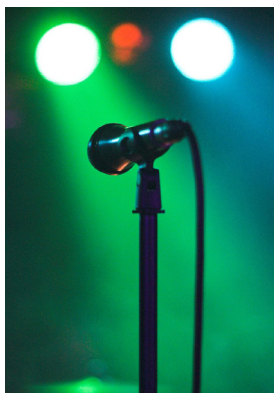
Please join us for this tremendous *mitzvah*. Call or e-mail me with any questions at 781-444-1263 or sntaum@gmail.com.



EVENTS IN JANUARY

Here is a selection of events this month. For the most current and complete event notices, please see the TBS website and the weekly email.

THREE SCORE OR MORE: COMEDY CABARET NIGHT AT THE JCC



Three Score and More (of Temple Beth Shalom) and Staying Connected (of Temple Aliyah) invite you to their third annual Comedy Cabaret Night at the Newton JCC. The cabaret will feature the smart, hip comedy of Tony V., Dan Naturman, and Dan Crohn.

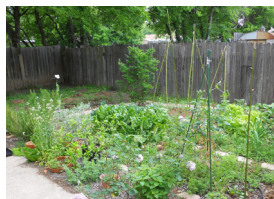
Saturday, January 17, 2015, 6:30 PM Schmoozing and Dessert, 8:00 PM for the Comedy Cabaret

LOCATION: Newton JCC

RSVP: By January 3, 2015. Please send a check for \$25.00 per person payable to Temple Beth Shalom with names of all attendees and their phone numbers to Millie Cohen, 67 Noanett Road, Needham, MA 02494

QUESTIONS? CONTACT: Roberta Gerson (robertagerson@comcast.net - 617.448.0523) or Ina Melen (imelen13@comcast.net - 617.759.262)

GARDEN CLUB



Neil Sanders (husband to Betty Sanders) and author of several books, will be sharing his humor and truthful presentation on gardening. Come hear a husbands "point of view."

Monday, January 12, 2015, 9:30 AM

QUESTIONS? CONTACT: Fawn Hurwitz (fhurwitz@aol.com or 781 444-3219)

TOT SHABBAT SERVICE AND DINNER



Celebrate Shabbat with songs, stories, and prayers in this monthly service designed especially for families with children ages 0-6. All are welcome!

Friday, January 9, 2015, 6:15 PM

QUESTIONS? CONTACT: Ellen Dietrick (edietrick@tbsneedham.org)

Planning an event? Submit it to the Scroll: <http://www.tfaforms.com/349526>

EVENTS (CONTINUED)

SHIR APPEAL PERFORMS



Shir Appeal, Tufts coed Jewish a cappella group will be performing at TBS as part of our Friday night *Shabbat Shira* service. Please join us for a musical winter evening.

Saturday, January 30, 2015, 6:15PM

AUDITIONS! THE WIZARD OF OZ



Temple Beth Shalom is pleased to present "The Wizard of Oz." We welcome all adults, teens and children (grade 3 and up) to audition! You don't need to be a Temple member, so please tell your friends. To schedule a specific time slot, call director Candy Gold at 1-617-966-6143. You are free to walk in as well. Please prepare 16-32 bars of a song NOT from the show. Please bring sheet music for the accompanist if you have it.

Performance dates are Saturday, May 2, 2015 at 8:00 PM and Sunday, May 3, 2015 at 2:00 PM and 7:00 PM. Tuesday, January 20 and Wednesday, January 21 from 7:00 - 9:00 PM and Sunday, January 25 from 6:00 - 8:00 PM

January 20, January 21 and January 25, 7:00 - 9:00 PM

REGISTER: Call Candy Gold at 1-617-966-6143 to schedule an audition time.

QUESTIONS? CONTACT: Richard Atkind (richatkind@verizon.net), Barbara Pack (barbpack@comcast.net), or Janet Zaval (janetzaval@gmail.com)

MAH JONGG TOURNAMENT



Join us for the 2015 Annual Needham Mah Jongg tournament sponsored by Sisterhood of TBS, Temple Aliyah Sisterhood and Needham Hadassah at Temple Aliyah. Pre-registration required by January 22. Registration fee is \$18.

Thursday, January 29th, 6:30 PM - 10:00 PM

REGISTER: <http://bit.ly/1EzROrA>

COST: \$18

TBS BROTHERHOOD: DINNER AND DRINKS



Join your Brotherhood for our regular gathering for dinner and drinks. A press-time the location and theme is TBD. Look for an evite the first week in January for details.

Sunday, January 25, 2015, 5:30pm

QUESTIONS? CONTACT: Jon Cohan (joncohan@gmail.com)

EDUCATION

Learning Hebrew Through Movement in Mayim

by Rachel Happel, Director of K-12 Learning

If you walk into any of our *Mayim* 2nd/3rd grade classrooms, you will likely see children joyfully jumping, spinning, running, and walking to various objects throughout the room. No, we haven't turned *Mayim* into a gymnastics class. Rather, we have introduced a new feature of the curriculum called "Hebrew Through Movement!"

Our approach to Hebrew learning at *Mayim* is based on what we know about language acquisition. We strive to mirror the way a first language is learned, emphasizing listening and speaking (in grades K-3) before reading and writing (which begins in grade 4). The children are exposed to Hebrew in *Mayim* classrooms through games and the regular use of Hebrew vocabulary, as well as during our weekly *t'fillah* (prayer service) in the sanctuary.

We introduced Hebrew Through Movement this year as way to provide more structure to the children's exposure to Hebrew vocabulary. Hebrew Through Movement is an adapted version of James J. Asher's Total Physical Response (TPR), in which students learn Hebrew by hearing and responding to Hebrew commands. It starts with a foundation in modern, spoken Hebrew but has as its goal making the prayers in our siddur, as well as synagogue and Jewish vocabulary, more easily accessible to those

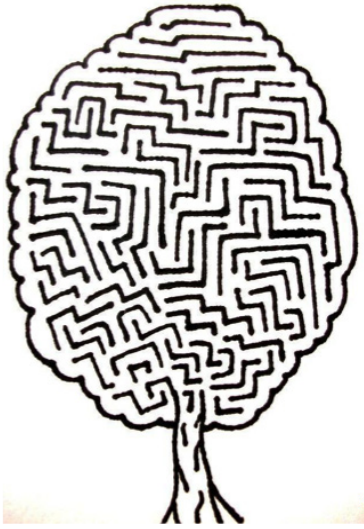
with limited learning time. You can learn more about Hebrew Through Movement on their website (www.hebrewthroughmovement.org).

Over the summer, our 2nd/3rd grade Jewish Learning Guides participated in training through the Jewish Education Center of Cleveland to become Hebrew Through Movement facilitators. They have really enjoyed introducing the children to Hebrew in this playful and structured format. You can view videos of the *Mayim* children engaging in Hebrew Through Movement on the *Mayim* Facebook page (<https://www.facebook.com/tbsmayim>). I encourage you to learn along with them on the videos so that we can all *likpotz* (jump), *l'histovev* (spin), and *larootz* (run) our way through TBS together!



KIDS PAGE

CELEBRATING TU B'SHEVAT, THE BIRTHDAY OF THE TREES



Tu B'Shevav Riddles

1. What has no fingers, but many rings?
2. What kind of tree can fit into your hand?
3. How do trees get online?

- Answers:
1. A tree.
 2. A palm tree.
 3. They log in.

There is a special blessing that can be said when you see a beautiful tree. In honor of *Tu B'Shevav*, search your neighborhood for a tree and say the blessing.

בָּרוּךְ אַתָּה יי אֱלֹהֵינוּ מֶלֶךְ הָעוֹלָם, שְׁכַחַה לּוּ בְעוֹלָמוֹ.

Baruch atah Adonai, Eloheinu melech haolam, shekacha lo beolamo.

We praise You, Eternal God, Sovereign of the universe, that such as these are in Your world.

Things to Do

Planting

- Plant parsley seeds in sod pots by a sunny window. Harvest the parsley for your Passover *seeder*.
- Plant a flowering bulb kit for a sunny window. In the middle of winter this is a wonderful hint of the spring season to come soon.

Crafts

- Take photos of beautiful trees and frame them.

- Make an edible bird/animal feeder with birdseed or plain popped popcorn and leave it in the branches of a tree.

Miscellaneous Activities

- Give *tzedakah* (charity) to an environmental organization.
- Participate in an environmental clean up project in your community or do your part by cleaning up trash in your yard or school playground

Adapted from ReformJudaism.org *Tu BiSh'vat Activities to Do at Home* by Melanie Cole Goldberg

LEARNING

WINTER SPARKS OF INSIGHT SERIES: "FINDING PEACE IN A PURE HEART"



AN EXPLORATION OF JEWISH MEDITATION, CHANT, AND SPIRITUALITY

Join us for a four-part series during which we will explore the basics of Jewish meditation and chant. Judaism has a rich tradition of practices that promote inner peace. Together, we will find ways to quiet our minds, experience group chanting of accessible spiritual melodies, and use open and inclusive discussion to reflect upon how we relate to ourselves, each other, and God. Through meditation, focusing on the best use of breathing and chanting, and sharing insights experienced along the way, we will come to a deeper understanding of our own personal spirituality and spiritual expression.

This intentional practice of Lev Tahor – “Pure Heart” – is a pathway to forgiveness and compassion and is known to reduce stress and physical discomfort and lead towards inner peace. No prior experience required.

Tuesdays, January 13th, 20th, 27th, and February 3rd, 7:30 PM - 8:30 PM

TEACHER: Noam Sender

REGISTER: Deb Hecht (dhecht@tbsneedham.org)

KOLOT KEHILLAH: VOICES OF THE COMMUNITY



Join Cantor Jonas and learn a new piece of music in the style of an “instant choir” to be sung during services. No musical knowledge, vocal training, or Hebrew proficiency is necessary. This is for all ages but an adult must accompany children under the age of 13. No registration required; just arrive in the sanctuary ready to sing!

Fridays, 5:45 PM - 6:10 PM, 1/16, 2/20, 3/20, 4/17, 5/15, 6/19

TEACHER: Cantor Marcie Jonas

Coming Soon...

REFORM JUDAISM: WHAT IT IS AND WHAT IT IS NOT



Rabbi Bob Orkand will lead participants in a look at Reform Judaism’s development, including its American origin, its philosophy, principles and institutions. Students will review Reform Jewish practice, including life cycle events and worship. This course will also touch on topical issues such as the role of women, homosexuality and mixed-marriage. As always, no prior knowledge is necessary and each class session will stand on its own. **Bring your own lunch. We’ll supply the drinks.**

Mondays, starting February 23, 11:45 AM - 1:00 PM

REGISTER: Deb Hecht (dhecht@tbsneedham.org)

TEACHER: Rabbi Bob Orkand

LEARNING

WINTER PARENTING & CHILD DEVELOPMENT CLASSES



Mondays

Toddler Art Class (Ages 1-3 years): Mondays, 9:30-10:15 AM

Second Time Around: (newborn-6 months): Mondays, 9:30-11:00 AM

Teeter Totters: (6-12 months): Mondays, 11:00am-12:00 PM

New Mamas, New Babies: (newborn - 3 months): Mondays, 11:30 AM - 1:00 PM

Tuesdays

JamBaby Music Class (Ages 3 months -3 years): Tuesdays, 10:15 AM-11:00 AM AND 11:15 AM-12:00PM

Wednesdays

Toddler Time: (18-24 months): Wednesdays, 9:30 AM-10:30 AM

Terrific Tots: (12-18 months): Wednesdays, 11:00 AM-12:00 PM

Giggles and Grins: (3-6 months), Wednesdays, 11:00 AM-12:30 PM

Mama To Be Class (2nd and 3rd Trimesters): Wednesdays, 6:30 PM-8:00 PM

New Sessions Begin in January

QUESTIONS? CONTACT: Dawn Ellis & Liz Berkman (bbb@tbsneedham.org)

RSVP: <http://www.tbsfamily.org>

TEMPLE TOTS



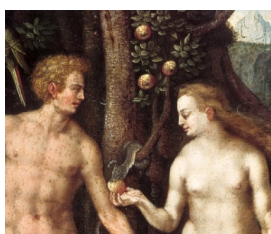
A unique program of creative Jewish learning designed to enrich the lives of young children and their families. Join us to explore the year through Jewish eyes with music, movement, stories and art focused on Jewish holidays and values. It is the perfect introduction to your child's formal Jewish education. Geared towards ages 1-3, the whole family (including older and younger siblings) are welcome!

Fridays, 9:45 AM - 10:45 AM, Session 2: 1/9, 1/16, 1/23, 1/30

QUESTIONS? CONTACT: Dawn Ellis & Liz Berkman (bbb@tbsneedham.org)

RSVP: <http://bit.ly/TBSchild>

"BIBLE STORIES ARE NOT JUST FOR CHILDREN" TO RESUME IN FEBRUARY



This special course runs at the same time as our weekly "Torah Study," providing a different learning alternative. Please join us for Shabbat morning minyan at 8:30 am, grab a nosh in between, and then choose a great learning path for your Shabbat!

We all have our favorite Bible stories: Adam and Eve, Noah and the flood, Jonah and the whale are three examples. We go through life remembering these biblical passages as stories for children but as not having as much relevance for adults. These Biblical stories contain important insights into human nature that can and will inspire much discussion. Each session will stand alone, so participants are free to attend all or some sessions. No prior knowledge is needed, only a desire to learn and an open mind.

Saturdays, starting February 7, 2015, 9:00 AM - 10:00 AM

TEACHER: Rabbi Bob Orkand

SAVE THE DATE

BETH SHALOM GARDEN CLUB: ANNUAL WORKSHOP/LUNCHEON



Sue Kaplan will help us learn to prepare for Needham's Art in Bloom (March 6-8) by teaching us how to interpret art at our workshop. Followed by a delicious potluck luncheon. Members only.

Tuesday, February 3, 2015, 9:00 AM, Simon Hall

QUESTIONS? CONTACT: Fawn Hurwitz (fhurwitz@aol.com)

COLLEGE NIGHT FOR PARENTS AND TEENAGERS



All community members are welcome to College Night, an evening of advice for parents of high school students who are exploring their college options, on Wed Feb 4th with Linda Shapiro, a psychologist, independent college admissions consultant, and former head guidance counselor at Newton North High School, will offer information to help you move smoothly through the process of identifying the right college, and filing applications. The event is sponsored by the Sisterhood of Temple Beth Shalom and is free.

Highschoolers can take part in a separate program about college and Jewish life on campus. Meet with current college students.

Wednesday, February 4th, 2015, 7:30 PM

QUESTIONS? CONTACT: Janice Epstein (janiceeps@comcast.net)

BROTHERHOOD/SISTERHOOD PRESENT: "MARRIAGE CAN BE MURDER"



The Brotherhood and Sisterhood of Temple Beth Shalom invite you to attend the wedding that will end all weddings. The mother of the bride has planned the perfect wedding, but before her beautiful daughter can even say "I do" a bloody killing mars the happy day. It is up to you, the wedding guests to find the killer.

Saturday, February 7, 2015

TICKETS: <http://tbsmurder.eventbrite.com>

SAVE THE DATE

HA'SHABBAT ASHER LISHLOMO: THE SHABBAT OF SALAMONE ROSSI HEBREO



Come celebrate Shabbat in the court of the Scuola Grande (Great Synagogue) of Mantua, circa 1624.

On Friday, February 27 at 6:15 PM, TBS will be transformed into an ancient Italian synagogue, compete with authentic period music, courtesy of Il Concerto di Salomone Rossi Hebreo.

TBS, in association with the Boston Jewish Music Festival (<http://bostonjewishmusicfestival.org>), presents this special evening of music and worship, co-directed by Cantor Louise Treitman and Richard Lustig, Ph.D.

It is sure to be una grande notte of musica and preghiera! Unitevi a noi (Please join us)!

Friday, February 27, 2015, 6:15 PM, Sanctuary

TBS GARDEN CLUB PRESENTS: NEEDHAM'S ART IN BLOOM 2015



Now in it's 7th year, award winning Needham's Art in Bloom will return by popular demand to the Needham Public Library on Saturday, March 7th from 9am – 5pm and on Sunday, March 8th from 1pm – 4pm. There will be 55+ mixed medium pieces of artwork by talented Needham High School students and creative, colorful, floral interpretations of each art item by members of the Beth Shalom Garden Club. Roche Bros. has generously sponsored this FREE event. Visit: NeedhamArtinBloom.com and Like us on Facebook.

**Saturday, March 7, 9:00 AM - 5:00 PM,
Sunday, March 8, 1:00 PM - 4:00PM, Needham Public Library**

SCHOLAR-IN-RESIDENCE WEEKEND: DR. RON WOLFSON



We are excited to welcome professor and author Dr. Ron Wolfson as our scholar-in-residence in March. This promises to be an exciting and educational experience for all. More information to follow.

Friday, March 13 - Sunday, March 15, 2015

Planning an event? Submit it to the Scroll: <http://www.tfaforms.com/349526>

Jon Cohan Brotherhood President

Growing up in West Hartford, Jon Cohan would eventually be reunited with fellow Connecticut-ite Gail Lustig (with whom he went to high school) when he joined TBS in 2004. Since then, he has not only experienced warm welcomes from many other congregants and community members, but he has helped many of them feel welcome by starting the softball teams, starting the fantasy football league, and now as the head of TBS's Brotherhood. Cohan also applies his friendly smile and desire to support others in his life outside of TBS. In addition to leading the marketing efforts for a Boston-based tech company, he also serves as a corporate mentor with MITX. He also reaches out to others at the gym, on cycling excursions and through the (more than) occasional game of Words with Friends. Jon enjoys spending time with his daughters Alison and Tess and is a regular at the poker table.



What does being Jewish mean to you?

A nice corned-beef sandwich...and the shared common values we all have.... But mainly the sandwich!

What is your favorite Jewish holiday?

Passover. I think the story of Passover has resonance throughout time and is relatable for both the past and current times. Plus I usually get to eat brisket!

What is your fondest memory involving Jewish life?

That is easy, the *Bat Mitzvahs* of my beautiful daughters Alison and Tess

What brought you to TBS?

I have always felt that it is important to be a part of a community and when we moved to Needham, TBS was a no-brainer. What keeps us here is the people and the leadership of our congregation.

Why did you become involved in temple leadership?

I have never been someone who sits on the sidelines. I like to be involved. I looked at a number of committees, volunteered for a few, and found a nice fit with the Brotherhood. Since then, I have been active in organizing events and eventually leading the group. I encourage all men to participate in one (or more) of our activities and to stop by our open board meetings held on the first Tuesday of every month at 7 pm at TBS.

How do you hope to contribute to our temple community?

My time and commitment is the most valuable asset I can give the organization. I expect to remain active with TBS for a long time to come!



TBS Brotherhood

The Brotherhood is the TBS men's community. We serve as a way to build connections with other members and are a complimentary benefit with your TBS membership. As a temple-wide organization we serve a variety of member needs ranging from structured programming such as the Leroy Davis sports breakfast - which this year attracted over 180 folks to hear Boston Globe writer Dan Shaughnessy speak - to team activities such as softball and fantasy football (are we all past the age of actually playing football?), to support of brothers in times of need to quarterly get together at local restaurants. It's a great group of guys.

We also work closely with other parts of the congregation and the community. Our December blood drive with the red cross is very well attended and we work with the sisterhood on joint events annually. Lastly our social justice and community service groups can always count on our support to 'retire' old clothing or put some muscle in building the succah.

We are always looking to add to our board. Our programming does not run itself and someone needs to make those tasty breakfast trays at the many breakfasts we host - the lox do not slice themselves you know. But more importantly, being part of the Brotherhood will help make life-long connections with your fellow members and you will have fun doing it.

Please attend one of our monthly open board meetings (we do not bite - - well most of us) held on the first Tuesday of the month at 7PM in the temple library. You can also connect with Brotherhood President Jon Cohan at 781-400-2175 or joncohan@gmail.com.



CONTRIBUTIONS

The Minimum donation for contributions in the *Scroll* is \$18.00.
"At birthdays, anniversaries, *yahrzeits*, etc., support your Temple Fund."

RABBI PERLMAN'S DISCRETIONARY FUND

DONOR

Ron & Gail Bor

Ken Goldberg & Family

Shelly & Ruth Bramson

Andrea & Jim Masterman

Marilyn & Bob Brooks
Sarah & Jamie Fleckner

IN APPRECIATION OF

Rabbi Jay's support following the passing of Harry Bor
Rabbi Perlman for conducting my father's Memorial Service
Rabbi Perlman's work as Seth Kleiman became a *Bar Mitzvah*
Rabbi Jay's beautiful wedding ceremony for Justin & Jesse
Rabbi Perlman's kindness
Rabbi Perlman as Josh became a *Bar Mitzvah*

DONOR

Jerry T. Sherman
Ralph & Ina Melen
Beverly Gottlieb
Beverly & Rochelle Gottlieb

IN HONOR OF

Jonah Perlman's 10th birthday
Gerald Ginsburg's momentous birthday
Rochelle Gottlieb
Deb & Ken LeClair

DONOR

Spike & Audrey Ely
Heidi Werther
Norma & Norman Rosin
Andrea Masterman
Stuart Schneller
Andrew Streisfeld

IN MEMORY OF

Harry Bor
Patricia "Patsi" Cibella
Judah M. Silverman
Jeremy Warnick
George Driks
Henry Streisfeld

RABBI MARKLEY'S DISCRETIONARY FUND

DONOR

Jerry T. Sherman

Shelly & Ruth Bramson

Marilyn & Bob Brooks
Sarah & Jamie Fleckner

Jerry T. Sherman

IN APPRECIATION OF

Marty Goldberg & the Brotherhood Retreat
Rabbi Markley's work as Seth Kleiman became a *Bar Mitzvah*
Rabbi Markley's kindness
Rabbi Markley as Josh became a *Bar Mitzvah*
Rabbi Bob Orkand's *Torah* Study

DONOR

Ruth Taylor

IN HONOR OF

Rabbi Markley

DONOR

Amy Weil
Suzy Tobin
Gerald Shapiro

IN MEMORY OF

Paul Reich
Eleanor Laskey
Daniel P. Shapiro

RABBI LENKE'S DISCRETIONARY FUND

DONOR

Shelly & Ruth Bramson

Sarah & Jamie Fleckner

IN APPRECIATION OF

Rabbi Lenke's work as Seth Kleiman became a *Bar Mitzvah*
Rabbi Lenke as Josh became a *Bar Mitzvah*

DONOR

Jeffrey Cotton
Paula & Seymour Rosen
Deborah LeClair
Marilyn Lichtman

IN MEMORY OF

Joseph Cotton
Manuel Rosen
George Schultz
Joseph Rosenblatt

CANTOR JONAS' DISCRETIONARY FUND

DONOR

Ken Goldberg & Family

Sarah & Jamie Fleckner

IN APPRECIATION OF

Cantor Jonas at the Memorial Service
S. David Memorial Goldberg
Cantor Jonas' beautiful voice as Josh became a *Bar Mitzvah*

DONOR

Marilyn Brooks

DONOR

Matthew Robinson
Harriet Lieb
Harriet Lieb
Margie & Alan Glou
Les Yampolsky
Marilyn Lichtman
Gerald Schumacher

THE CHESED FUND

IN APPRECIATION OF

My beautiful caring shawl

IN MEMORY OF

Sherman Seeche
Barney Drooker
Lillian Drooker
Nate Shone
Harold Yampolsky
Rhoda Lifland
Frances Schumacher

CHILDREN'S CENTER FUND

DONOR

Debbie & Jeff Kublin

IN MEMORY OF

Abraham Kublin

EDUCATION FUND

DONOR

The Goldfine Family
The Goldfine Family
Marlene & Jerry Schultz

IN HONOR OF

Emily Adler becoming a *Bat Mitzvah*
Matt Peljovich becoming a *Bar Mitzvah*
The birth of June & Rich Atkind's granddaughter, Madeline

DONOR

Ruth & Shelly Bramson
Michelle Acker
Rabbi Rifat Sonsino

IN MEMORY OF

Howard Bramson
Freda Acker
Albert Sonsino

GENERAL FUND

DONOR

Lynn & Michael Jacobson
Sarah & Jamie Fleckner

IN APPRECIATION OF

High Holy Day Services
Sandy Hain for all that she did to help with Josh's *Bar Mitzvah*

DONOR

The Rashi School
The Rashi School

IN HONOR OF

Seth Kleiman becoming a *Bar Mitzvah*
Joshua Fleckner becoming a *Bar Mitzvah*

DONOR

The Channen Family
The Channen Family
Ellen & Michael Sheetz
The Channen Family
Scott Sparr
Beth Shulman
The Krushell Family

IN MEMORY OF

Avis Young
Michael Tribush
Leonard Pasternak
Vivian M. Channen
Diane Sparr
Jeanette Kams
Avis Young

S. DAVID GOLDBERG MEMORIAL FUND A NAMED GENERAL FUND OF TEMPLE BETH SHALOM

DONOR

Linda & Allan Gersten
Katie Wheeler Mathews & Alex Mathews
Wendy Goodman
Vicki Denhoffer & Family

IN MEMORY OF

S. David Goldberg
S. David Goldberg
S. David Goldberg
S. David Goldberg

RICHARD TODD SACKS JEWISH LIFELONG LEARNING FUND

DONOR

Gloria Block & Claire Marks

IN HONOR OF

Marilyn Proctor's special birthday

DONOR
Ralph & Ina Melen

SPEEDY RECOVERY
David Proctor

DONOR
Ina Melen, Sandy Mason,
Barbara Davis, Honey
Deutsch, Beverly Leonard
Edna Bello & Madeline
Hirsch

IN MEMORY OF
Richard Todd Sacks

MUSIC FUND

DONOR
Sarah & Jamie Fleckner

IN APPRECIATION OF
Emily Perlman feeding Josh snack
every Thursday in preparation for
his becoming a *Bar Mitzvah*

DONOR
Vera Burtman

IN MEMORY OF
Annette Feldman

JERRY ARANSKY PASSPORT TO ISRAEL FUND

DONOR
Boris & Irina Guralnik
Mr. & Mrs. Richard Tishman

IN MEMORY OF
Igor Bezverkhny
Stacy J. Tishman

AMY SANKER KAPPEL MEMORIAL FUND

DONOR
Mimi Klein
Mark Rosen
Jay Shapiro

IN MEMORY OF
Clara Holtzman
Lille Rosen
Jason Levy

GERSTEN/HOISINGTON MEMORIAL LECTURE FUND

DONOR
Aimee Mann

IN MEMORY OF
Trosi & Edward M. Kaplan

KIVI GREBBER MEMORIAL FUND

DONOR
Mimi Klein
The Hill Family

IN MEMORY OF
Hyman Holtzman
Rachel Hanin Darrell

NED SALTZBERG MEMORIAL FUND

DONOR
Steve & Susan Tanner

IN MEMORY OF
Avis Young

**PATTI & LOUIS GROSSMAN
EDUCATIONAL SCHOLARSHIP FUND**

DONOR
Carole & Henry Mittelman
Louis & Patti Grossman

IN MEMORY OF
Harry Allen Bor
Morton S. Grossman

PRAYERBOOK FUND

DONOR
Stephen & Sandra
Shusterman
Lisa Gilman
Ina Melen, Sandy Mason,
Barbara Davis, Honey
Deutsch, Beverly Leonard
Edna Bello & Madeline
Hirsch

IN MEMORY OF
Daniel Shusterman
Bert Gilman
Richard Todd Sacks

SANCTUARY FLOWER FUND

DONOR
The Maslow Family
The Dufault/Seavey Family
The Waller Family
The Teeter Family
The Crossman Family
Lauren Greenstein & Tricia
Sherman

IN HONOR OF
Matthew Maslow becoming a *Bar Mitzvah*
Rebecca Seavey becoming a *Bat Mitzvah*
Samuel Waller becoming a *Bar Mitzvah*
Gabrielle Teeter becoming a *Bat Mitzvah*
Kenneth Crossman becoming a *Bar Mitzvah*
Daniel Barkowitz at the Sisterhood
Membership Dinner

DONOR
Nate & Judy Levine

IN MEMORY OF
Samuel Jacob Levine

SISTERHOOD ONEG FUND

DONOR
The Maslow Family
The Dufault/Seavey Family
The Waller Family
The Teeter Family
The Crossman Family
Lauren Greenstein & Tricia
Sherman
Randi & Robert Goldman

IN HONOR OF
Matthew Maslow becoming a *Bar Mitzvah*
Rebecca Seavey becoming a *Bat Mitzvah*
Samuel Waller becoming a *Bar Mitzvah*
Gabrielle Teeter becoming a *Bat Mitzvah*
Kenneth Crossman becoming a *Bar Mitzvah*
Daniel Barkowitz at the Sisterhood
Membership Dinner
The naming of their daughter,
Natalie Goldman

SOCIAL ACTION FUND

DONOR
Nancy & Monty Krieger

IN HONOR OF
Josh Fleckner becoming a *Bar Mitzvah*

DONOR
Susan Patkin
Nancy & Steve Cutter &
Family
Marilyn Lichtman
Louise & William Carmen
Carol & Arnold Farber

IN MEMORY OF
Herman Kaufam
Heidi Cutter
Eliot Lifland
Israel Aronson
Morris Joseph Gold

TORAH AND SANCTUARY FUND

DONOR
Myra Barsky

IN MEMORY OF
Samuel Barsky

YOUTH FUND

DONOR
Carole & Philip Aronson
Raisa Bezverkhny

IN MEMORY OF
Samuel G. Goldenthal
Igor Bezverkhny

YAHREZEITS

JANUARY 2

Rutherford Atkind
Esther Salomon Bogin
David Boodman
Barry Bornstein
Louis Bramson
Harold Brody
Rose Bycoff
Israel Cohen
David Darish
Wilfred Davis
Leonard Fine
Roberta Frank
Ida Gilvarg
Robert Glaser
William Goldman
Ida Goldstein
Paul Granek
Jerome Herman
Larry S. Karlin
Philip Kates
Patricia Koritz
Florence Kurr
Abraham Landy
Aaron Lederman
Ira Levy
Mary Lipsitz
Martin J. Nadler
Hyman Needle
Goldie Phillips
Sonny Pinals
Boris Revzin
Alice Rosenblatt
Ruth Sandler
Frances Schultz
Gertrude Shaffer
Denise Shapiro
Bessie Sherman
Sylvia Sherman
Eva Silverlieb
Nathan Silverstein
Harold Stavisky
Elliott Stone
Richard Tarlin
Louis Wolfson
Ruth Zuker

JANUARY 9

Rita Aronson
Earl Martin Burtman
Rosalie Chudnofsky
Paula S. Cohen
Sidney Crastnopol
Robert Deutsch
Harry Druger
Sonia Ediff
Pauline Fine
Besse Fisher
Jason Fishman
Jacob Francer
Georgia Freid
Ida Goldstein
Juana "Chiqui" Goldstein
Irving Gorden
Abraham Gorodetsky
Jacob Hyman
Irving Kams

Naomi Lefcowitz-Dephoure

Herman S. Levine
Jeanne Levine
William Lurie
Nathan R. Melen
Bernice Pearlman
Alan Rockmore
Leonard Rubin
Isadore Sacks
Edward C. Saltzberg
Nathan Saul
Oscar Schultz
Isadore Shulman
Abraham Shwom
Gertrude Ullian
Sol White
Rose Zakon

JANUARY 16

Anne Baker Loss
Jeanette Burack
Archie Cohen
Arthur Cohen
Jack J. Epstein
Donald Flaxman
Ruth Flicop
Allen Garf
Constance L. Gitelman
Cindora Goldberg
Jerome Daniel Goodman
Leonore Gumpert
Lena Hentoff
Sidney H. Kahn
Kate Kaplan
Joel Karten
Stuart S. Kaufman
Lillian Lefrak
Mark Jay Levinson
Ernest Lichtman
Irving Pack
Pauline Phillips
Sonya A. Pike
Max Rosenberg
James Samter
Louis Satz
Samuel Schatz
Harry Shapiro
Morris Taitz
Teddy Troderman
Norman Urwitz
Lillian Wallack
Albert Weener
Walter Wekstein

JANUARY 23

David J. Aronson
Mildred Aronson
Sumner "Sonny" Balder
Sally Blatt
Morris Butt
Dora Crocker
Bessie Darish
Rose Davis
Dorothy K. Diamondstein
Shirley Fanger
Herman Fine

Saul Fine
Marsha Ginn
Vera Goldstein
Sylvia Gordon
Morris Isikoff
Miriam Katzman
Amelia Kornfeld
Sarah Lanstein
Ruth Messing
Norman Ostroff
Samuel Peck
Harold Raemer
Edward Raskind
Dorothy Rosenblatt
Elizabeth Satz
Sam Scheib
Sarah R. Sherman
Morris Silverlieb
Joseph "Joe" Singer
Mier I. Spector
Frances Stearns
Henry Stone
Morris Weinberg
Minnie Yanofsky
Eli Zaval
Joseph Zeidman

JANUARY 30

Edward Andler
Louis Berg
Gladys Berlowe
Sidney Birnbach
Pearl Blum
Kay Bookman

Philip Brier
Sylvia Copeland
Sol Davidson
Arthur Eckstein
Lars Eriksson
Julius Feigelman
Helen Feldberg
Reginald Frischling
Frank S. Ganak
Doris Geffen
Evelyn Goldberg
Harold Golden
Roberta Milender Goldwyn
Renee Hart
Sally Hirschmann
Gertrude Koss
Maurice Laugerman
Myrna Liner
David E. Miller
Randy Phillips
Goldie Pinals
Cynthia R. Rumppler
Phyllis Rye
Lillian W. Scheibel
Frederick Scher
Sidney Schnitt
Laura Schuyler
David Silverman
Anne Sobel
Maynard Sockol
Robert W. Stager
Doris Stern
Shirley Taich
Nathan N. Weiner

YIZKOR ELOHIM

We extend our sympathy to...

Alice and Fredrick Rapkin
on the passing of their father, Samuel Kaplan

Jean and Joe Sands
on the passing of their sister-in-law, Marcia Landy

Jonathan and Tracy Biener
on the passing of their father and grandfather,
Ronald Bienen

Melanie Kelfer and David Spiegel
on the passing of their father, Robert Kelfer

Robert and Lisa Black
Amy and Matthew Ross, Jonathan and Nathaniel
Rebecca and Morris Levine,
Jack, Hannah and Samantha
on the passing of their father, grandfather
and great-grandfather, Arnold Black

CHESTNUT DENTAL 

FRANKLIN 38 Pond St Suite 204 · 508-520-6660
NEEDHAM 87 Chestnut St · 781-444-6650

dental directors amy regen, dmd, & jon shusterman, dmd

www.chestnutdental.com

.....

We specialize in pediatric, orthodontic & adult dentistry—taking care of your family from infancy to adulthood



Century 21 

Commonwealth

Needham's #1 Agents for 2011, 2012, 2013
 We would love to help you with any of your real estate needs!

Noah Pearlstein, Vice President
 781-603-6317

Lisa Pearlstein, Agent
 781-603-6472



592 Washington Street • Wellesley, MA 02482 • 781.237.8000
www.CommonMoves.com

TUFTS UNIVERSITY'S
SHIR APPEAL
 COED JEWISH A CAPPELLA AT TUFTS UNIVERSITY



CATCH A SPECIAL PERFORMANCE!
JANUARY 30TH 2015
 SERVICES BEGIN AT 6:15

TEMPLE BETH SHALOM
 670 HIGHLAND AVE., NEEDHAM, MA 02494

LEARN MORE ABOUT SHIR APPEAL!
WWW.SHIRAPPEAL.COM
FACEBOOK.COM/SHIRAPPEAL
YOUTUBE.COM/SHIRAPPEAL



Daryl Cohan
 AWARD WINNING REALTOR

As a Keller Williams REALTOR® Daryl Cohan strives to turn your real estate goals into reality. Whether you are a seller or a buyer, she will guide you through the process sharing her market knowledge, experience and resources to ensure a successful real estate transaction.

Contact Daryl today: 781-343-4051
 Keller Williams Realty
 1151 Walnut Street, Newton, MA 02461




East West Auto Transport
 Worldwide Vehicle Shipping
www.eastwestautotransport.com


14 Dean Street
 Millis, MA 02054

Alan Perry
 President & CEO

781-763-SHIP (7447) ext. 101
aperry@eastwestautotransport.com

KW Insurance Agency
AND
YANOFSKY INSURANCE
ARE PROUD TO SUPPORT
TEMPLE BETH SHALOM



CALL 781-751-9080
FOR WISDOM
ABOUT INSURANCE.
 AUTO · HOME · BUSINESS
www.kwinsurance.com

Or Call our Cambridge Office at 617-492-4150

PLEASE SUPPORT OUR ADVERTISERS

617-365-1870

617-965-4822

Sandy Presser
Personalized Weight Loss
sipresser@aol.com

sandypresserweightloss.com

Preserving Traditions,
Strengthening Faith

Levine Chapels

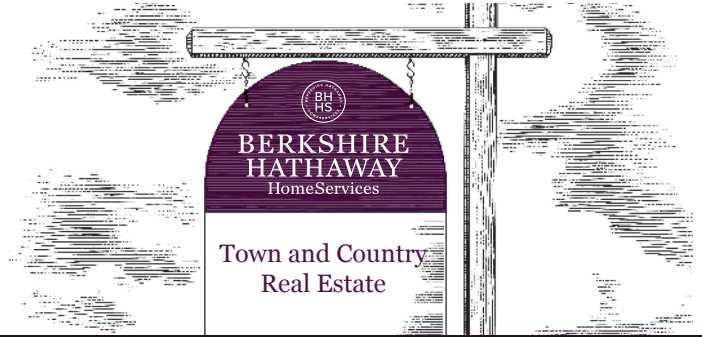
470 Harvard Street | Brookline | 617-277-8300
www.levinechapel.com

Stanetsky Memorial Chapels

1668 Beacon Street | Brookline | 617-232-9300
475 Washington Street | Canton | 781-821-4600

Stanetsky-Hymanson Memorial Chapel

#10 Vinnin Street | Salem | 781-581-2300
www.stanetsky.com



It's a sign.

When one of the world's most admired companies puts its name on a real estate sign, that's a good sign for the market and a great sign for you.



Jill Finkelstein



Jane Migdol



Michael Cohen



Lauren Baum



Leslee Winston

1089 Great Plain Ave. Needham, MA 02492
781-444-1234 www.bhhstowncountry.com

SHARON MEMORIAL PARK
is pleased to announce the opening of our
NEW WELCOME CENTER
& CHAPEL



Chapel now available for Indoor Funeral Services
Pre-need Planning / Interfaith Sections Available

781.828.7216

www.sharonmemorial.com

BREZNIAK RODMAN
FUNERAL DIRECTORS

Independent • Family Owned

In The Tradition Of Our Great-Great Grandfather
Jacob H. Levine (1858-1944)

617-969-0800

800-554-2199



Louise Condon Realty, Inc.
"Needham's Home Town Broker"

781-449-6292

Let Us Help You with Your Real Estate Needs

399 Chestnut Street, Needham, MA 02492

See our listings at www.condonrealty.com

PLEASE SUPPORT OUR ADVERTISERS

Do you want continued independence or added security? Choose both. Choose Kindred Assisted Living – Avery Crossings.



Independence, Security, Support.

This is what you will find at Avery Crossings assisted living residence. Our residents enjoy spacious apartments, gourmet meals, caring personal assistance and much more.

At Avery Crossings you can continue living the life you enjoy with the extra support you need. This means peace of mind for you and your family.

Call 781.234.6200 for additional information.



110 West Street
Needham, Massachusetts 02494

© 2014 Kindred Healthcare Operating, Inc. CSR 179781-01, EOE

Dedicated to Health, Comfort and Well-Being

capturing memories
OhGee! Studios



617-276-5676

www.ohgeestudios.com

Century Bank

Our family's bank. And yours.

Marshall M. Sloane
Chairman

Barry R. Sloane
President & CEO

Linda Sloane Kay
Executive Vice President

32 Langley Road • Newton Centre, MA • (617) 641-2300

210 Boylston Street • Chestnut Hill, MA • (617) 582-0920

75 Central Street • Wellesley, MA • (781) 235-6500

CenturyBank.com

BostonBlinds®

Custom Window Fashions
Free In-Home Shopping
Repair Service

HunterDouglas
window fashions

Call John Bulian at
(617) 558-7727

62 Pettee St, Newton Upper Falls
www.bostonblinds.com

Exceptional
Service
Great Prices



TEAM LIEB



*Serving Needham with over
57 years of REALTOR experience.*

Instant Cell Phone Access:
Jeff Lieb: (617) 966-8800
Harriet Lieb: (617) 966-8802

REALTY CONSULTANTS
The Key to Satisfaction

jefflieb@realtor.com • harrietlieb@realtor.com
Needham, MA 02492 • (781) 449-3200

ClassicHealthcare

Steven Van Dam, MD, FACP

Classic Healthcare is the concierge medical practice of Dr. Steven Van Dam

Offering high quality, personalized primary care.

To learn more, visit www.ClassicHealthcare.com or call Amanda or Jennifer at 781-559-0230

300 Chestnut Street | Suite 1400 | Needham, MA 02492

Dr. Van Dam is a Harvard Medical School Instructor in Medicine and maintains relationships with Boston's top specialists.



*Serving the
Needham
Community for
over 20 years*

SUPERCUTS®

\$3 off
Any Product
or Service
(Reg. \$15.95 or more)

NEEDHAM
1299 Highland Ave
781-455-9990

120 Highland Ave
781-444-4346

Offer valid only at participating locations with minimum purchase of \$15.95. Not valid with any other offer. No cash value. Coupon cannot be duplicated. One coupon valid per customer. Present coupon prior to payment. © 2014 Supercuts, Inc. Printed USA. Expires 08/31/2015. L68

Harvey's Hardware

**“Everything
In Hardware”**

1004 Great Plain Ave.
Needham

781-444-4515

Truly Yogurt & Ice Cream

We offer delicious ice cream,
frozen yogurt and
soft serve.

There is always something
to satisfy everyone at

Truly Yogurt
with generous portions
at reasonable prices.

35 Grove Street

Wellesley

781-239-1356

www.trulyyogurt.com

“2014 Best of Wellesley”
Wellesley Townsman
Gary Goldman, Owner

Great Ways to Shop

 **Roche Bros.**
Your family deserves the best.

The Supermarket that always offers you the
freshest quality foods & customer service.



 **Roche Bros.**
Your family deserves the best.

HOME COOKING TO GO

For The Quick Pick-Up Meal

 **Roche Bros.com**
home delivery

Easy shopping from the comfort of
your own home.

The Brotherhood and Sisterhood
of Temple Beth Shalom
cordially invite you to attend...

A Wedding, a Murder, Dinner & Dancing



Marriage
Can Be
Murder



Live music by: "Boys to Mensch" (featuring our very own Rabbi Todd)

Saturday Night - February 7, 2015 @ 6:45 PM

***R.S.V.P.* - tbsmurder.eventbrite.com**

Proper Attire Please (it IS a wedding!)

Temple Beth Shalom

670 Highland Avenue
Needham, MA 02494

781-444-0077 - Temple Office

781-449-3274 - Fax Number

781-444-0388 - Religious School Office

781-449-3016 - Children's Center

tbshalom@tbsneedham.org

www.tbsneedham.org

Member, Union for Reform Judaism;
Affiliated with Synagogue Council
of Massachusetts

Rabbi Jay Perlman

Rabbi Todd Markley

Rabbi Rifat Sonsino, Rabbi Emeritus

Cantor Marcie Jonas

Rabbi Michele Lenke

Edward Zaval, President

Daniel T. Barkowitz, Executive Director

NON-PROFIT
U.S. POSTAGE

PAID

BOSTON, MA
PERMIT NO. 58044

Address Service Requested