



# Temple Beth Shalom *Scroll*

VOLUME 39, NUMBER 8 • 670 HIGHLAND AVENUE • NEEDHAM, MA 02494 • APRIL 2012



## A Toast to Our Children

**Saturday, May 19 at 7:00 pm**  
**Temple Beth Shalom, Needham**

An evening with dinner, drinks and  
a live and silent auction.

All proceeds support our education programs  
for children, youth & teens.

Please log on to [www.tbsneedham.org](http://www.tbsneedham.org) to register  
and to access the auction and tribute book forms,  
or mail in the registration form below.

### Taste of the Town – A Toast to our Children

Tickets are \$99 per person.

Name: \_\_\_\_\_ Phone: \_\_\_\_\_

Address: \_\_\_\_\_ E-mail: \_\_\_\_\_

# of tickets \_\_\_\_\_ @ \$99 = Total \$ \_\_\_\_\_

Seat me with: \_\_\_\_\_

**Almost Sold Out!**  
**Reserve Your Spot Today**

Checks payable to: Temple Beth Shalom  
670 Highland Avenue, Needham, MA 02494

Attn: Taste of the Town

## *Looking Inside*

Shabbat Services.....	2
B'nei Mitzvah.....	2
Commemorate Yom Hashoah.....	2
From Rabbi Perlman.....	3
Three Score and More.....	4
Coming: New Temple Website.....	4
From the President.....	5
Strategic Action Update.....	5
Sisterhood.....	6
A Taste of Meah.....	6
Children's Center.....	7
Rummage Sale.....	7
Garden Club.....	8
Jewish Film Series.....	8
Green Tips.....	8
Used Baseball Equipment Drive.....	8
Brotherhood.....	9
Chesed Community News.....	10
Member Relations.....	10
TBS Walking Tour of Jewish Boston...	11
Sparks of Insight Series.....	11
Temple Calendar of Events.....	12-13
Yahrzeits.....	14
Shabbat Hikes.....	14
Children's Center Summer Program...	14
Taste of the Town.....	15
Contributions.....	16-18
Sharing our Lives.....	17
Matzoh Ball Soup Off.....	24

## From Rabbi Perlman

### Maggid by Marge Piercy

The courage to let go of the door, the handle.  
The courage to shed the familiar wall whose very stains and leaks are comfortable as the little moles of the upper arm; stains that recall a feast, a child's naughtiness, a loud blattering storm that slapped the roof hard, pouring through.

The courage to abandon the graves dug into the hill, the small bones of children and the brittle bones of the old whose marrow hunger had stolen: the courage to desert the tree planted and only begun to bear; the riverside where promises were shaped; the street where their empty pots were broken.

The courage to leave the place whose language you learned as early as your own, whose customs however dangerous or demeaning, bind you like a halter you have learned to pull inside, to move your load; the land fertile with the blood spilled on it; the roads mapped an annotated for survival.

The courage to walk out of the pain that is known into the pain that cannot be imagined, maples, walking into the wilderness, going barefoot with a canteen into the desert; stuffed in the stinking hold of a rotting ship sailing off the map into dragons' mouths,



Cathay, India, Siberia, goldeneh medina, leaving bodies by the way like abandoned treasure. So they walked out of Egypt. So they bribed their way out of Russia under loads of straw; so they steamed out of the bloody smoking charnelhouse of Europe on overloaded freighters forbidden all ports -

Out of pain into death or freedom or a different painful dignity, into squalor and politics. We Jews are all born of wanderers, with shoes under our pillows and a memory of blood that is ours raining down. We honor only those Jews who changed tonight, those who chose the desert over bondage.

Who walked into the strange and became strangers and gave birth to children who could look down on them standing on their shoulders for having been slaves. We honor those who let go of everything but freedom, who ran, who revolted, who fought, who became other by saving themselves.

Emily, Liana, Jonah and I wish you and those that you love a joyful and meaningful Passover.



Friday Evening Service, April 27 at 7:15 p.m.

Honoring Nancy Perkins

Tufts A cappella Group: "Shir Appeal"

Join us on Friday, April 27 at 7:15 p.m.

as we thank Nancy Perkins and formally

dedicate the beautiful Israel painting that she has created for the TBS community. The art work was inspired by Nancy and her family's trip to Israel with Beth Shalom in 2008.

We are proud to have the painting hanging in our atrium.

It was created by Nancy with love in honor of her family,

Larry, Hanna, Max, and Danny.

Also that night, we are thrilled to welcome

Tufts University's Jewish a cappella group

"Shir Appeal" to our services and oneg, adding extra spirit and joy to an already special evening.





An exciting new addition  
to our Temple Beth Shalom community,

# Three Score and more . . .


(formerly Triple Chai)  
will be hosting a brunch and  
musical presentation at TBS on  
Sunday, April 29 at 11:30 a.m.

Our guest singer will be  
*Sheryl Levitt Schwartz*

Sheryl brings groups together with heartwarming lyrical renditions  
from the best that the music world has to offer.

You will not want to miss this fabulous morning of entertainment!  
Cost: \$10.00 per person

-----  
Name: \_\_\_\_\_  
Address: \_\_\_\_\_  
Telephone: \_\_\_\_\_ Email: \_\_\_\_\_

Make check payable to  
 Temple Beth Shalom and mail to:  
Mildred Cohen 67 Noanett Road Needham, MA 02494



**Visit the temple website  
starting on April 2  
to see all of the incredible changes coming to the TBS Religious School!**

*"To borrow from the classic Oldsmobile commercial,  
'This won't be your parents' religious school!'"*

## From the President



“In lieu of a full President’s message this month, our executive leadership team has been working to launch our new “Strategic Action” Update section of the *Scroll*. Each month it will

be dedicated to one of our six strategic plan elements, each of which is quite rich and deep in content and learning. When our Strategic Planning Committee convened more than a year ago, they asked: How do you translate Mission, Vision and Values into priorities, goals and action steps? Now, following an in depth process of reflection and assessment, we begin to take action.

Please keep in mind that there are layers and layers of exploration and preparation aiming to move forward in the most thorough and responsible ways possible. As we do, your voices – questions and feedback – will be critical.

In this first ‘edition’ of the “Strategic Action Update”, we explore action steps related to our Temple home. I offer the words of Rabbi Larry Hoffman as inspiration for this leg of our journey: “There are communal homes we call synagogues. The word synagogue comes from the Greek synagogue, meaning “assembly”. The Parallel Hebrew term, *beit hak’nesset*, also means “home of assembly”. Like a home, the synagogue was originally just a place for people to gather. In time, the synagogue became also *beit hamidrash*

and *beit hat’fillah*, “home of study” and “home of prayer”. In Judaism, neither study nor prayer is a private matter. They are communal pursuits of responsibility by a covenanted people.”

Whether we are gathering, studying, or praying, we want our space to meet the functional, programmatic, and spiritual needs of our community, all the while deepening relationships. And we are blessed enough to have this opportunity to take stock of our TBS home through the lens of our Mission and Vision.” Enjoy this process. And if you feel surprised, or unclear, ask questions – they are always welcome.

*L’shalom*  
Beth

## Strategic Action Update

**This Month: Focusing on Our Building**  
“Ensuring a physical and spiritual home which allows for the full expression of our Mission and Vision.”

From the moment our Strategic Planning Team began its work in late 2010, it was clear that a significant assessment of our building needs was necessary. Built for a congregation half to three-quarters our size, our community’s growth in recent years has left our building ‘bursting at the seams.’ Insufficient classroom space for our children, regular parking challenges, closets turned into offices for our clergy and other senior staff, a consistent inability to house our activity because of lack of space – not to mention the structural repairs needed for a building that is utilized as heavily as ours over time – all emphasize the importance of evaluating our space.

Wanting to address our building reality holistically – in a manner that is inspired by our vision and with an eye towards meeting both present and future needs – our Strategic Planning Team called together the ‘building leadership’ of our community. These dedicated lay leaders, many of whom have been caring for our temple for years, offered historical perspective, insight, and advice. Not surprisingly, their recommendation was that we need to look beyond ‘band aid’ solutions and consider a broader response to our space needs.

These findings moved our Strategic Planning Team to identify our building needs as one of our primary areas of

planning focus. For us, the temple is more than simply a structure of ‘bricks and mortar.’ It is our spiritual home – the space in which we share our lives, a place where we learn, laugh, celebrate, cry, support each other, raise our children and grandchildren, and work to make a difference beyond our walls. Our temple home should be a reflection of who we are., and, equally, it should inspire us to even more broadly fulfill our mission as a community.

As was shared in recent weeks, following the adoption of the Strategic Plan – we formed a TBS “Mikadash” (‘Sacred Space/ Building) group. This group facilitated the engagement of the architectural firm of Finegold Alexander + Associates in order to help bring our discussions to the next level.

The team from FA+A – Moe Finegold, Tony Hsiao, and Rebecca Berry – have been charged with the task of professionally and objectively assessing our current building situation. It is important to emphasize that Beth Shalom’s partnership with FA+A does not presuppose any specific building project. Any planning for extensive work related to our temple home will involve decision making by our entire community. And our discussions are just beginning.

As a first step in our assessment process, our architects have started meeting with small leadership groups related to the various circles of community life: education directors and faculty, worship, social action, compassionate outreach, learning committee chairs, building, Sisterhood,

Brotherhood, Youth and Garden Club, among others. Our architects have been touring our building - seeing firsthand how we ‘live’ within our space. Finally, they have started to learn about who we are – about what is important to us – and they have started to consider how we might most responsibly respond to our current and anticipated space challenges.

In a very short time, we will broaden our community conversations so that all of our voices will take part in helping to shape our future. These promise to be exciting conversations. Through the coming weeks and months, we will slowly and thoughtfully take steps that will enable us to move from strength to even greater strength. We look forward to embarking on this journey together.

Each month will feature an “action” update on a different element of our TBS 2012 Strategic Plan. If you have not yet seen the six elements of our community’s Strategic Plan or our statements of Mission and Vision, please go to the temple website, [www.tbsneedham.org](http://www.tbsneedham.org).

As always, if you have questions on this or on any element of our strategic action agenda, please feel free to contact any of us.

With warmest wishes for a happy and healthy Passover!

*Beth Pinals, Temple President*  
*Rabbi Jay Perlman*  
*Rabbi Todd Markley*  
*Daniel Barkowitz, Executive Director*

## Sisterhood

We have a wonderful problem in Sisterhood; recent years with annual surpluses. So, last spring we decided to make sure that these funds are put to good use immediately. A large percentage of our surplus, 70%, will be donated to Temple Beth Shalom. After all, one of the major goals for Sisterhood is to benefit our Temple Beth Shalom community.

The remaining 30% of the surplus will be allocated based upon input and voting of Sisterhood members. Here are the specifics that we decided upon last spring for the remaining 30% of the excess funds.



- 15 percent of our excess funds would go to an Israel-based charity chosen from within the WRJ (Women of Reform Judaism) YES Fund
- 15 percent would go to a “community” charity that benefits either women and/or children
- A Tzedakah Committee will be formed, solicit nominations for “community” charities, narrow to 3 finalists, present it for a vote by Sisterhood members at Donor Dinner
- The Tzedakah Committee will select the YES Fund Israel based charity

The possibilities and opportunities from this Tzedakah process are endless. Sisterhood’s Tzedakah might launch a new program for a charity. Sisterhood’s Tzedakah might deepen our personal connections to Israeli women and children. Sisterhood’s Tzedakah might broaden our horizons and allow for thoughtful discussions about charitable priorities. Sisterhood’s Tzedakah might motivate members to become more involved in a specific charity. Sisterhood’s Tzedakah might inspire members to increase their financial donations to Sisterhood.

So, the first step now is for you to join me at Donor Dinner on May 24. We will have a great time, funraising and fundraising!

*In Sisterhood,  
Marsha Moller  
1st Vice President*

Save The Date . . .  
for fun, friends, and fundraising at

## The Sisterhood of Temple Beth Shalom’s Annual Donor Dinner

Thursday, May 24

Boutiques and Hors D’oeuvres at 6pm  
Dinner at 7pm with  
Catering with Distinction

Surprise entertainment!

Be on the look out for your mailed invitation.

Questions? Want to help?

Contact Patti Grossman at [grossclan@comcast.net](mailto:grossclan@comcast.net) or  
Suzy Tobin at [SuzyLTobin@hotmail.com](mailto:SuzyLTobin@hotmail.com)

### Essential Dates:

**Tuesday, April 3** - Our monthly Board meeting begins at 7:30 p.m. in the Garden Club Room. All Sisterhood members are welcome to attend.

**Thursday, May 3** - Join us for a wonderful mitzvah opportunity by assisting at the Needham Community Senior Lunch, to be held at the temple. Volunteers are needed from 11:00 a.m. - 2:00 p.m. Please contact Susan Brisk at [asid@euro-plus.com](mailto:asid@euro-plus.com).

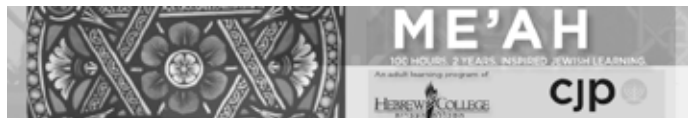
**Sunday & Monday, June 3rd & 4th** - As you clean out your closets this spring, be sure to put aside your unwanted treasures for our **Spring Rummage Sale, a major Sisterhood fundraiser**. For more information, or to volunteer your time, please contact Bonnie Littman at 781-449-8793 or [bonnlitt@gmail.com](mailto:bonnlitt@gmail.com).

### A “TASTE OF MEAH”

A special hour of learning from scholar David Bernat - Assistant Professor in the Department of Religion and the Jewish Studies Program at Wellesley College. Shabbat Morning, April 21 (in lieu of our regular Torah Study) Time: 9:00 - 10:00 am

Beginning in the fall of 2012, Temple Beth Shalom (in partnership with Hebrew College) is proud to be hosting the “Meah Program.” This 100 hours (“Meah” in Hebrew) of Jewish learning from top scholars and teachers in the Boston area has received rave reviews from the thousands of participants over the years (including many TBS members!). TBS is excited to, once again, be offering this opportunity in the coming year.

To help inspire those who might be interested in participating in “Meah,” we are offering a single-session “taste” of the program with scholar David Bernat. Please join us for what promises to be an inspired morning of learning!



## Children's Center



The Children's Center Unicorn Class (3-4 year olds) recently began a new practice of inviting a member of the Temple Beth Shalom community to join them and share what

they do while they are at TBS each day. We hope to integrate and build on the value of kehillah (community) by gaining some understanding of how the people we see at TBS contribute to our community. Through understanding the different responsibilities each person has, we gain respect and an understanding for how our school/community functions. Our first guest was Rachel Oblath, the Children's Center

Administrator! Rachel is the first person we see every day when we come in. Rachel helps us with our coats every day, and we visit her every time we go to our cubbies! We had many questions for Rachel! Before Rachel's visit we guessed what Rachel's does while she is at TBS every day. Guesses included "She uses the computer." "She needs lots of privacy."



Rachel showed us that each family has their photo on the computer. She also told each child they have a file with their name on it. This was new and exciting news, and Rachel showed us each one.

We wrote Rachel thank you notes the next day to show her we appreciated the time she spent with us. We learned many new things. Thank you Rachel!

*Ellen Dietrick*



### Temple Beth Shalom Sisterhood **Spring Rummage Sale**

Sunday, June 3 - 2:00 - 5:00 p.m.

Monday, June 4 - 5:00 - 8:00 p.m. - Bag Sale

**Drop-off - Sunday, June 3**

**9:00 a.m. - 12:00 p.m. in Simon Hall**

*Sisterhood needs your donations and assistance.*

*Please call to volunteer!*

(Please no broken or damaged items)

Baby and infant accessories are no longer accepted, but baby clothing is welcome.

No undergarments will be accepted.

No computers or monitors, unless they are new.

For more information, or to volunteer, please contact

Bonnie Littman: 781-449-8793 or

bonnlitt@gmail.com



### **PARENTING THROUGH A JEWISH LENS**

In this 10-week program,  
explore core values (ikkarim)  
that can strengthen your family.

Beginning Tuesday, October 16  
7:30 - 9:00 p.m. Temple Beth Shalom  
Questions: Contact Ellen Dietrick:  
edietrick@tbsneedham.org or 781-449-3016

## Garden Club

### Essential Dates

Monday, April 2, BSGC Board Meeting,  
7:00 p.m. in the Garden Club Room

Tuesday, April 10, Design Workshop III,  
Espousal Center, Waltham - 10:00 a.m.

Monday, April 23 - PROGRAM  
-"Terrariums" with Art Scarpa, Simon Hall  
7:00 p.m.

April 28 - 30, MFA in Boston  
"April brings the primrose sweet,  
Scatters daisies at our feet".

On April 23 in Simon Hall at 7:00 p.m., Beth Shalom Garden Club will present a Program/Workshop called "Terrariums" with Art Scarpa. To plant a terrarium all you need is a clear container, soil and some plants. Materials will be provided at the workshop, so come and learn the secrets to growing gardens under glass. This is an innovative project to share with your children and grandchildren.

Art in Bloom 2012, at the Museum of Fine Arts, Boston, from Saturday, April 28 through Monday, April 30, is one of the most fascinating rites of Spring in Boston. Creative

floral designers will interpret famous works of art. Free floral demonstrations and guided tours of Art in Bloom will run from 10:00 a.m. to 3:00 p.m. each day. We are proud to announce that Laurie Bogosian, an arranger, and Debra Kraft, her assistant, will represent our Garden Club. Please join us for these special events.

"And then my heart with pleasure fills  
and dances with the daffodils"

Anita Glickman and Sylvia Golden  
Co-Presidents

## TBS JEWISH FILM SERIES

presents

### The Prince of Egypt

April 1 at 4:00 p.m.



In every generation, the haggadah admonishes us to experience Yitziat Mitzrayim (the Exodus from Egypt) as if we had personally been present. Before I saw *The Prince of Egypt*, I was skeptical about the power of an animated film to move me towards that experience. This is an extraordinarily powerful film and would make an excellent addition to any household's

Passover activities. *The Prince of Egypt* (1998) is an animated version of the Exodus story, slightly tilted to focus on the relationship between Moses and Pharaoh. The film asks the viewer to consider the personal price Moses pays when he comes into conflict with the people who raised him and turns instead to the people from whom he came. It also raises the profile of the women in the Moses story, especially the prophetess Miriam, his sister, and Zipporah, his wife. It does this in ways that do not so much contradict the Biblical tale as they add to it in the spirit of midrash. The animation is beautiful, and the writers wisely did not create the "cute" characters that plague too many animated films. This is a serious film that happens to be made in animation.

Rabbi Ruth Adar, author of *Jewish Film: A Rabbi's Commentary on the Movies*.

Join us for a special treat, suitable for film lovers of all ages. Movie theater concessions will be served.



Sponsored by Shomrei Adamah

### Spring has sprung - make use of natural light!

- Use task lighting - focus the light where you need it rather than lighting a whole room
- Use power strips for electronics so that you can turn them off completely when not in use.
- If you aren't working remotely, power down your computer at night and on weekends, this saves energy and increases the life of your computer.
- Unplug power adapters, battery chargers, printers, speakers and other similar items whenever the equipment is fully charged or disconnected from the charger.

\* Yale Office of Sustainability, Yale University

## Used Baseball Equipment Drive April 1-21

Don't throw out your old baseball equipment.

You can give it to kids in need.

We have partnered with

The Emancipation Project, a nonprofit organization in Lowell, MA to give gently-used and new baseball equipment to poor youth teams in the Dominican Republic.

Gloves • Cleats • Balls • Bats • Pants • Helmets • Catching Gear

### How to donate:

- Between April 1 - 21, please drop off any gently-used or new equipment for players 9 to 17 in the labeled box in the downstairs lobby of the Needham Public Library or at Modell's on Needham Street.
- We will also gladly accept checks or gift cards to Modell's (so that we can buy new equipment)

Make checks payable to "The Emancipation Project"  
c/o The Cohens, 75 Peacedale Road, Needham, MA 02492.

# Brotherhood



Congratulations to our top six finishers:  
Peter Mesnik, Barry Lipsett, Stephen Gladstone,  
Rob Markstein, Chris Hood, and Alan Glaser.



Join Brotherhood for our Annual Paw Sox Family Night  
Saturday, June 9 at 6:05 pm Tickets are only \$10 each  
Please contact Ed Schreider at [edschreider@yahoo.com](mailto:edschreider@yahoo.com).



## Chesed "Caring" Community News

### **TBS is a Chesed (Caring) Community:**

We are here to share life's challenges and joys.

**Please let us know if you or someone you know in the TBS community is:**

Experiencing an illness or recovering from a surgery or illness

Struggling as a caregiver

Celebrating the birth of a baby

Seeking employment

Grieving a death in the family

**Your temple family is here.**

### **Our Chesed (Caring) Community can offer:**

Home cooked or store bought meals

Gift cards to nearby restaurants

Caring wraps providing a warm embrace

Gifts for newborn babies

Caregivers support meetings

Housesitting during funerals

Rides to local appointments

Mentorship for those seeking employment

Whatever your need might be, we will try to help.

Please contact the temple office at 781-444-0077 or

[tbshalom@tbsneedham.org](mailto:tbshalom@tbsneedham.org) or contact

Wendy Shulman at [wshulman1@gmail.com](mailto:wshulman1@gmail.com) or 781-444-5009.

## **WE NEED YOU**

**Join our Caring Community  
Volunteer Corp**



We provide support services to the in our temple community who are ill or recovering, or who are in need of emotional or physical support, including caregivers.

We provide support in a wide range of ways:

- delivering meals
- hand knitting caring wraps and baby blankets
- reaching out to bereaved families
- providing support for caregivers
- offering programming around issues of aging
- providing career programming and networking opportunities
- offering rides to appointments
  - visiting those in need

### **How can you and your family help?**

- **Join our volunteer corp and receive email notifications when there is a need and sign-up to help when you can.**
  - **Attend Chesed programming**
  - **Notify the Rabbis if you know of someone in need.**

*Please contact Wendy Shulman: [wshulman1@gmail.com](mailto:wshulman1@gmail.com) to join our Caring Community Volunteer Corp.*

## **Member Relations**

The TBS Member Relations committee would like to thank everyone who attended our

annual adult Purim shpiel in March!

Our committee is looking to expand.

If you are interested in helping to coordinate great temple-wide events, welcome new members, or cultivate prospective members, this committee is for you. Contact Jenny Small at [jennylee27@gmail.com](mailto:jennylee27@gmail.com) or Gregg Bierman at [gregg\\_bierman@yahoo.com](mailto:gregg_bierman@yahoo.com).



## **Are you caring for an aging parent or other relative?**

TBS offers monthly meetings for caregivers.

Caregivers in our community need a confidential forum in which to express their feelings and share information about what they are going through.



**Monthly meetings are at 7:30 p.m.  
at the temple:**

**April 26 and May 22**

**For more information contact  
Wendy Shulman at**

**[wshulman1@gmail.com](mailto:wshulman1@gmail.com) or 781-444-5009.**

**Feel free to drop in  
An RSVP is welcome but not necessary.**

# TBS WALKING TOUR OF JEWISH BOSTON

When: Sunday, May 6

Time: 9:00 a.m. - 4:00 p.m.

Guide: Ellen Smith, (Author, Leader, Academic Historian)

Meet: We will depart by bus from Temple Beth Shalom

Cost: \$36



Limited to 30 participants. Please reserve your spot now!

Our program will include lunch at Durgin Park and bus transportation from TBS into Boston and returning to Temple Beth Shalom at 4pm.

Join us for an outstanding and informative walking tour of Jewish Boston. This day program will include Boston's historic turn-of-the-century Jewish immigrant neighborhoods, including Boston's North End, West End, and Beacon Hill. As well, we will stop at Boston's landmark Vilna Shul (1919) and the 1995 New England Holocaust Memorial.

The tour will focus on immigrant housing; religious, social, and educational institutions; and the civic response to mass immigration 100 years ago.

Come and walk some of Boston's most scenic and historic districts and trace the journeys of Jewish immigrants to Boston.

Our Guide: Ellen Smith - Currently, Ellen is the Director of the Hornstein Jewish Professional Leadership Program at Brandeis University. She is also trained as both an academic historian and a museum curator. Ellen is looking forward to a great experience with our TBS community.

## **Information and Registration:**

For registration please contact Rachel Block, TBS Education Administrator at [rblock@tbsneedham.org](mailto:rblock@tbsneedham.org) or 781-444-0388. Please make your check payable to Temple Beth Shalom and send it to the Temple Beth Shalom Learning office, Attention: Rachel Block. For more information please call Ina Glasberg at 781-444-3873 or Beverlee Bookman at 781-444-2496.

*This event is sponsored by Adult Learning*

## **Spring "Sparks of Insight" Series:**

### **IN THE FOOTSTEPS OF THE PROPHETS - An Exploration of the Lives of Isaiah, Jeremiah, and Ezekiel**

Tuesdays, April 10, 17, and 24 7:30 - 9:00 p.m.

Teacher: Rabbi Rifat Sonsino, TBS Rabbi Emeritus

The call for justice echoes through the lives and exhortations of the Hebrew prophets. Join Rabbi Sonsino as he takes us on a journey through the lives and teachings of the Hebrew Bible's major prophetic personalities.

Rabbi Sonsino is the Rabbi Emeritus of Temple Beth Shalom and an adjunct professor in Boston College's Theology Department. In 1966, Rabbi Sonsino received his ordination from the Hebrew Union College - Jewish Institute of Religion and in 1975 received his PhD from the University of Pennsylvania in Bible and Near Eastern Studies.

Rabbi Sonsino is the author of several noted books and articles.

## **Information and Registration:**

For more information and to register, please contact Rachel Block, TBS Education Administrator at [rblock@tbsneedham.org](mailto:rblock@tbsneedham.org) or 781-444-0388.

# TEMPLE CALENDAR OF EVENTS

## APRIL 2012

Sunday	Monday	Tuesday	Wednesday
<p>9th of Nisan 5772</p> <p>8:45 am Music/T'fillah -- Sanctuary</p> <p>9:00 am Tikkun Olam Day -- Simon Hall / Community Room / Outside of Temple</p> <p>9:30 am Temple Tots -- Classrooms / Playground</p> <p>10:00 am Wilderness Tikkun Olam Event -- Outside of Temple</p> <p>11:00 am Tikkun Olam Project - Feeding Everyone -- Community Room</p> <p>1:30 pm BESTY Loves Tikkun Olam -- Simon Hall</p> <p>3:00 pm Adult Learning Film Series -- Community Room</p> <p>6:30 pm Fiddler Rehearsal -- Community Room</p> <p>7:00 pm Elementary Learning Kickoff Event -- Sanctuary / Simon Hall</p>	<p>10th of Nisan 5772</p> <p>7:00 am Lay-Led Morning Minyan -- Sanctuary</p> <p>9:15 am Children's Center Havdalah -- Community Room</p> <p>9:30 am Rabbinic Study Group -- Library</p> <p>3:30 pm Yom Chugim - Grades 3-5 -- Atrium / Simon Hall / Sanctuary / Classrooms</p> <p>4:40 pm Music Grade 2 -- Living Room</p> <p>6:00 pm Teen Program Baby Shower for Hannah -- Community Room</p> <p>7:00 pm Garden Club Board Meeting -- Garden Club Room</p> <p>7:30 pm Religious School Committee Meeting -- Room 12</p> <p>7:30 pm TBS Keshet Meeting -- Room 15</p>	<p>11th of Nisan 5772</p> <p>4:30 pm TELEM -- Outside of Temple</p> <p>5:40 pm 7th Grade Sha'arim Presentation Night -- Sanctuary / Simon Hall</p> <p>7:00 pm Adult Learning: Counting the Omer: A Preparation -- Community Room</p> <p>7:00 pm Brotherhood Board Meeting -- Library</p> <p>7:30 pm Fiddler Rehearsal -- Simon Hall</p> <p>7:30 pm Israeli Dancing -- Room 15</p> <p>7:30 pm Sisterhood Board Meeting -- Garden Club Room</p>	<p>12th of Nisan 5772</p> <p>8:45 am Children's Center Conversations Coffee -- Library</p> <p>10:00 am PEL Meeting -- Library</p> <p>3:30 pm Yom Chugim - Grades 3-5 -- Atrium / Simon Hall / Sanctuary / Classrooms</p> <p>4:40 pm Music Grade 2 -- Living Room</p> <p>7:00 pm Fiddler Rehearsal -- Simon Hall</p> <p>7:00 pm Teen Learning Committee Meeting -- Community Room B</p> <p>7:30 pm Adult Learning Committee Meeting -- Room 15</p> <p>7:30 pm Member Relations Committee Meeting -- Garden Club Room</p>
<p>16th of Nisan 5772</p> <p>No School - Elementary Learning (K-5)</p> <p>2:00 pm Prospective Member Openhouse -- Atrium</p> <p>6:00 pm Fiddler Rehearsal -- Simon Hall</p>	<p>17th of Nisan 5772</p> <p>7:00 am Lay-Led Morning Minyan -- Sanctuary</p> <p>9:15 am Children's Center Havdalah -- Community Room</p> <p>9:30 am Rabbinic Study Group -- Library</p> <p>4:40 pm Music Grade 2 -- Living Room</p> <p>6:30 pm Personnel Practices Committee Meeting -- Library</p> <p>7:00 pm BESTY Board Meeting -- Youth Lounge</p> <p>7:00 pm Shomrei Adamah Committee Meeting -- Room 15</p>	<p>18th of Nisan 5772</p> <p>6:00 pm Confirmation Service Preparation -- Sanctuary</p> <p>6:00 pm Youth Dinner -- Community Room</p> <p>6:30 pm 11th Grade -- Room 12</p> <p>6:30 pm Confirmation Class - 10th Grade -- Room 13</p> <p>6:30 pm Cooking Connections -- Community Room A</p> <p>6:30 pm Grade 12 -- Room 11</p> <p>7:00 pm Fiddler Rehearsal -- Simon Hall</p> <p>7:30 pm Israeli Dancing -- Room 15</p> <p>7:30 pm Spring Sparks of Insight -- Garden Club Room</p>	<p>19th of Nisan 5772</p> <p>8:45 am Children's Center Conversations Coffee &amp; PTC Meeting -- Library</p> <p>10:00 am PEL Meeting -- Library</p> <p>4:40 pm Music Grade 2 -- Living Room</p> <p>6:00 pm Religious School K-12 Staff Meeting -- Community Room A</p> <p>7:00 pm Fiddler Rehearsal -- Simon Hall</p>
<p>23rd of Nisan 5772</p> <p>April Break - NO Religious School or Children's Center</p> <p>6:00 pm Fiddler Rehearsal -- Simon Hall</p>	<p>24th of Nisan 5772</p> <p>April Break - NO Religious School or Children's Center</p> <p>Temple Office Closed</p> <p>7:00 am Lay-Led Morning Minyan -- Sanctuary</p>	<p>25th of Nisan 5772</p> <p>April Break - NO Religious School or Children's Center</p> <p>7:00 pm Fiddler Rehearsal -- Simon Hall</p> <p>7:30 pm Spring Sparks of Insight -- Garden Club Room</p>	<p>26th of Nisan 5772</p> <p>April Break - NO Religious School or Children's Center</p> <p>10:00 am PEL Meeting -- Library</p> <p>7:00 pm Fiddler Rehearsal -- Simon Hall</p>
<p>30th of Nisan 5772</p> <p>April Break - NO Religious School or Children's Center</p> <p>6:00 pm Fiddler Rehearsal -- Simon Hall</p> <p>7:00 pm Yom HaShoa Service -- Community Room</p>	<p>1st of Iyyar 5772</p> <p>Children's Center and Religious School Classes Resume</p> <p>7:00 am Lay-Led Morning Minyan -- Sanctuary</p> <p>9:15 am Children's Center Havdalah -- Community Room</p> <p>9:30 am Rabbinic Study Group -- Library</p> <p>4:40 pm Music Grade 2 -- Living Room</p> <p>7:00 pm Garden Club Program -- Simon Hall</p>	<p>2nd of Iyyar 5772</p> <p>4:30 pm TELEM -- Outside of Temple</p> <p>6:00 pm Confirmation Service Preparation -- Sanctuary</p> <p>6:00 pm Youth Dinner -- Community Room</p> <p>6:30 pm 11th Grade -- Room 12</p> <p>6:30 pm Confirmation Class - 10th Grade -- Room 13</p> <p>6:30 pm Cooking Connections -- Community Room A</p> <p>6:30 pm Grade 12 -- Room 11</p> <p>7:00 pm Fiddler Rehearsal -- Simon Hall</p> <p>7:30 pm Cantor Marcie Jonas -- Library</p> <p>7:30 pm Israeli Dancing -- Room 15</p> <p>7:30 pm Spring Sparks of Insight -- Garden Club Room</p>	<p>3rd of Iyyar 5772 Yom HaZikaron</p> <p>8:45 am Children's Center Conversations Coffee -- Library</p> <p>9:00 am Children's Center Dancin' Nancy Program -- Community Room</p> <p>10:00 am PEL Meeting -- Library</p> <p>11:45 am No Lunch Bunch, Teacher Learning -- Community Room</p> <p>4:40 pm Music Grade 2 -- Living Room</p> <p>7:00 pm Board of Trustees Meeting -- Community Room</p> <p>7:00 pm Fiddler Rehearsal -- Simon Hall</p>
<p>7th of Iyyar 5772</p> <p>6th Grade Bar / Bat Mitzvah Kallah</p> <p>8:45 am Music/T'fillah -- Sanctuary</p> <p>9:30 am Temple Tots -- Classrooms / Playground</p> <p>11:30 am Three Score and More Brunch -- Simon Hall</p> <p>4:00 pm Matzah Ball Soup Contest -- Simon Hall</p> <p>6:00 pm Fiddler Rehearsal -- Community Room</p>	<p>8th of Iyyar 5772</p> <p>7:00 am Lay-Led Morning Minyan -- Sanctuary</p> <p>9:15 am Children's Center Havdalah -- Community Room</p> <p>9:30 am Rabbinic Study Group -- Library</p> <p>3:30 pm Rappin' with the Rabbi -- Library</p> <p>4:40 pm Music Grade 2 -- Living Room</p> <p>7:30 pm TBS Keshet Meeting -- Room 15</p>		

Legend:

 20s / 30s

 Adult Learning



Thursday	Friday	Saturday
<p><b>5</b> 13th of Nisan 5772</p> <p>7:00 am Lay-Led Morning Minyan -- Sanctuary  11:30 am Rabbi Ullman - "The Bible Journey" -- Garden Club Room  3:30 pm Music/T'fillah -- Sanctuary  6:00 pm Sha'arim Dinner -- Simon Hall  6:30 pm Madrichim I -- Room 11  6:30 pm Madrichim II -- Room 16  6:30 pm Modern Hebrew I -- Room 13  6:30 pm Modern Hebrew II -- Room 14  6:30 pm Sha'arim Cooking -- Simon Hall Kitchen  7:00 pm Adult Bar/Bat Mitzvah Class -- Garden Club Room  7:00 pm Taste of Judaism -- Community Room  7:30 pm Worship Committee Meeting -- Room 15</p>	<p><b>6</b> 14th of Nisan 5772</p> <p>Erev Pesach  No Children's Center  No K Shabbat Program  No School in Needham  7:30 am Finance Committee meeting -- Rabbi Perlman's Study  5:00 pm Mincha Service -- Sanctuary</p>	<p><b>7</b> 15th of Nisan 5772  First day of Passover</p> <p>8:30 am Passover Morning Service -- Sanctuary  9:00 am Torah Study -- Community Room</p>
<p><b>12</b> 20th of Nisan 5772</p> <p>No 6th Grade Class or Sha'arim  7:00 am Lay-Led Morning Minyan -- Sanctuary  11:30 am Rabbi Ullman - "The Bible Journey" -- Garden Club Room  3:30 pm Music/T'fillah -- Sanctuary  6:00 pm Teen Program Baby Shower for Hannah -- Simon Hall  7:00 pm Taste of Judaism -- Community Room  7:30 pm Engaging Israel -- Sanctuary</p>	<p><b>13</b> 21st of Nisan 5772  Last day of Passover</p> <p>NO Children's Center  Temple Office Closed  7:00 am Passover Morning Service (Yizkor Read) -- Sanctuary  7:15 pm Simchat Shabbat Service -- Sanctuary</p>	<p><b>14</b> 22nd of Nisan 5772</p> <p>8:30 am Shacharit Service -- Community Room  9:00 am Torah Study -- Community Room  5:00 pm Bat Mitzvah - Sophia Wells -- Sanctuary</p>
<p><b>19</b> 27th of Nisan 5772  Yom HaShoah</p> <p>April Break - NO Religious School or Children's Center  7:00 am Lay-Led Morning Minyan -- Sanctuary</p>	<p><b>20</b> 28th of Nisan 5772</p> <p>April Break - NO Religious School or Children's Center  6:15 pm Tot Shabbat -- Sanctuary / Community Room  7:00 pm 20's/30's Shabbat Dinner -- Community Room  7:15 pm Shabbat Services -- Sanctuary</p>	<p><b>21</b> 29th of Nisan 5772</p> <p>8:30 am Shacharit Service -- Community Room  9:00 am Torah Study -- Community Room  11:00 am B'nei Mitzvah - Peter Rabinovitz &amp; Ally Tuttelman -- Sanctuary  2:00 pm Shomrei Adamah Shabbat Hike</p>
<p><b>26</b> 4th of Iyyar 5772  Yom Ha'atzma-ut</p> <p>7:00 am Lay-Led Morning Minyan -- Sanctuary  9:00 am Children's Center Dancin' Nancy Program -- Community Room  3:30 pm Music/T'fillah -- Sanctuary  6:00 pm Sha'arim Dinner -- Simon Hall  6:30 pm Modern Hebrew I -- Room 13  6:30 pm Modern Hebrew II -- Room 14  6:30 pm Sha'arim Cooking -- Simon Hall Kitchen  7:00 pm Adult Bar/Bat Mitzvah Class -- Garden Club Room  7:00 pm Taste of Judaism -- Community Room  7:30 pm Caring for the Caregiver -- Room 15  7:30 pm Engaging Israel -- Sanctuary</p>	<p><b>27</b> 5th of Iyyar 5772</p> <p>10:45 am Children's Center Shabbat Celebration -- Sanctuary  11:00 am K Shabbat Program -- Rooms 13 and 14  6:00 pm All BESTY Shabbat Unplugged -- Community Room  6:15 pm Tot Shabbat -- Sanctuary / Rooms 23 &amp; 24  7:15 pm Shabbat Services -- Sanctuary</p>	<p><b>28</b> 6th of Iyyar 5772</p> <p>6th Grade Bar / Bat Mitzvah Kallah  8:30 am Shacharit Service -- Community Room  9:00 am Torah Study -- Community Room  11:00 am B'not Mitzvah - Amber Crossman &amp; Allie Queler -- Sanctuary</p>

# Yahrzeits

## APRIL 6

David Eric Bailit  
Barbara Behar  
Melvin Breistein  
Ernest S. Berez  
Joseph Blum  
Joseph Dephoure  
Theodore Epstein  
Herbert Fanger  
Nancy R. Goff  
Ginda Ilyutovich  
Sidney M. Kantoff  
Sylvia Kowal  
Abraham Levenson  
Eleanor S. Levy  
Abraham G. Luskin  
Marcelle Marx  
A. Solomon Menter  
Albert Mittelman  
Rose Newman  
Louis Samuel Pearlstein  
Florence Price  
Harry Singer  
Ruth L. Smith  
Max Stavisky  
Gloria Turley  
Charles Wilson

## APRIL 13

Freda Barsky  
Bella Bloom  
Louis Bloom  
Selma Brick  
Jennie Burtman  
Ira Chaffin  
Henry Cutler  
Adele Bulian Davis  
Ada Fanger  
William "Bill" Freid  
Abraham Gershman  
Michael Goldberg  
Lewis Grebber  
Morris Hurwitz  
Doris Kameron  
Betty A. Katz

Louis Klebanow  
Esther Lefkovich  
Mary Michelson Marion  
Jane L. Munick  
Esther Needle  
Joseph Newman  
Phyllis Rotman  
Helen Scheib  
Robert Schneider  
Dorothy M. Schnitt  
Sol Schultz  
Frank R. Sherman  
Beatrice Siegal  
Ann Simon  
Harold Sloane  
Sadie Smith  
Barnet Sobell  
Irving Spigle  
Harold J. Stieber  
Benjamin Stocklan  
Robert Tishman  
Judith Wein  
Marjorie Whitecross

## APRIL 20

Joseph Aarons  
Jack Adler  
Rose Becker  
Lillian Carp  
Steven Chesin Cohen  
Susan Lipsett deVries  
Irma Feldman  
Peggy Aron Samet Fine  
David Fisher  
Shirley Goldman  
Dinah Goldsheid  
Ida F. Gordon  
Henry Green  
Norman Greenfield  
Ruth A. Halpert  
Barbara Halzel  
Roberta Hoffman  
William Hootstein  
Monroe Inker  
Hilda Isenstadt  
Lawrence W. Keepnews

Pauline Landy  
Arlene Lieberman  
Edith Matloff  
Dora Radler  
Jacob Raphael  
Margaret Rodman  
Emil Sadler  
Alex Schumacher  
David Sherman  
John Torrisi  
Mitchell Wasserman  
Izadore Weener  
Richard Todd White  
Benjamin Zakon  
Benjamin Zeitler

## APRIL 27

Sylvia Aptheker  
Florence Basner  
Harry Canal  
Rose M. Chersonson  
Bernard Danzig  
Philip Faneuil  
Bessie Fisher  
Samuel Gass  
Frank Ginn  
Cele Glou  
Morris Goldberg  
Laura Goldner  
William Ledner  
Morton S. Miller  
Estelle Nash  
Louis Reiss  
Florence Rodenstein  
Edna Rosin  
Esther 'Bobbi' Sadow  
Nancy Alperin Samores  
William Schultz  
Philip Simon  
Joseph Solinsky  
Rose Spellman  
Eva Stocklan  
Benjamin Wiener  
Harold Young  
H. Henry Young

Shomrei Adamah

Guardians of the Earth



Shomrei Adamah invites you to join us once a month on Saturday for "Shabbat Hikes".

Come schmooze and cruise our local wildlife with us in the spirit of Shabbat.

Contact the hike leader for questions or cancellations due to inclement weather otherwise just show up at the meeting point.

For more information about "Shabbat Hikes" through June go to [www.tbsneedham.org](http://www.tbsneedham.org) and refer to Shomrei Adamah Shabbat Hikes.

**Date: April 14**

**Hike: Wellesley Trails Brook Path**

**Meeting: Parking area at Wellesley High Athletic field on Smith Street, 2:00 p.m.**

**Leader: Lois Sockol, [isockol@comcast.net](mailto:isockol@comcast.net), 781-864-2393**

*Other Information: Brook Path is a pleasant walk on level and partially paved paths for 2 miles. It runs along Fuller Brook, past the Hunnewell School, to the Nehoiden Golf Course at which point the hike will loop back.*

## Children's Center Summer Program Now Enrolling

Whether you are entering kindergarten or as young as two,

*Climb and tumble, sing and play,*

*Summer at the Children's Center is only four months away!*

*Bring along your lunch and together we'll eat*

*Summer at TBS can't be beat!*

*We are ready to spend the summer with you!*

*Bring your bathing suit and get ready for fun,*

*We'll splash in the water and run in the sun.*

*Flexibility reigns - choose one week or more.*

*After that choose three days or four.*

*So sign up now and we'll save you a spot,*

*You'll want to be there when it's hot!*

**Summer at Temple Beth Shalom Children's Center:**

**Age 2- Rising Kindergarten**

**June 11 - July 26 Monday through Thursday**

**Choose 3 or 4 days per week • Pick up at 12:30 or 2:00 p.m.**

**Contact Rachel Oblath, Children's Center Administrator to register.**

**781-449-3016 or [roblath@tbsneedham.org](mailto:roblath@tbsneedham.org).**

Temple Beth Shalom welcomes . . .

**Visiting Soldiers from the Israeli Defense Forces**

**Tuesday, May 1 from 7:30 - 9:00 p.m.**

Each year, as part of the Combined Jewish Philanthropies "Boston - Haifa Connection," a group of soldiers from the Israeli Defense Forces comes to Boston to learn more about the American Jewish community and to share insights about life in Israel. Join us for a very special evening when Temple Beth Shalom will welcome these fine young men and women. Discussion and question/answer will be part of a wonderful evening. Refreshments will be served.

**On May 19, we will Toast our Children.  
Our TBS youth programs need your support!**



*Be a special part of Taste of the Town  
by placing an ad in this year's Tribute Book.*

Your "Toast" in Taste of the Town's Tribute Book can fund:

- \$1500 - full page, BACK COVER, scholarships for students in need
- \$1000 - full page, INSIDE COVER, educational field trips for experiential learning
- \$750 - full page, CENTERFOLD, a family holiday learning experience
- \$360 - full page, art materials for one month
- \$180 - half page, a shelf of high quality children's literature
- \$125 - quarter page, a Jewish cooking class
- \$54 - "Blessing" a week of challah baking

*As members of 3 Score and More" it gives us great pleasure and pride to support our outstanding and innovative learning programs and special youth activities—this truly represents going from a wonderful past to a visionary future—thanks to our special Rabbis-staff and you, our Temple family.*

Ina and Ron Glasberg

*My experience in the Sha'arim program has been better than I ever imagined. I am grateful that TBS is able to offer these programs. I have made so many connections with friends and teachers that have helped me to feel part of my Jewish community*

Current Sha'arim Student

Please consider placing an ad as a tribute to someone, a special lifecycle event, to honor your child, your child's education program or your child's teacher.

Go to [www.tbsneedham.org](http://www.tbsneedham.org) to place your ad online or fill out the form below with a check payable to Temple Beth Shalom and mail to:

Temple Beth Shalom, Attn: Taste of the Town 670 Highland Ave. Needham 02494

*Please reserve*

- \$1500 - full page, BACK COVER SOLD
- \$1000 - full page, INSIDE COVER (4.75" x 7.5")
- \$750 - full page, CENTERFOLD SOLD
- \$54 - "Blessing" - 1/6 of a page
- \$360 - full page (4.75" x 7.5")
- \$180 - half page, HORIZONTAL (4" x 3")
- \$125 - quarter page, HORIZONTAL (3" x 1.75")

Name: \_\_\_\_\_ Email: \_\_\_\_\_

Address: \_\_\_\_\_ Phone: \_\_\_\_\_

Wording for ad: \_\_\_\_\_

*Questions? Need help with wording? Contact Nancy Berger at 781-449-4601 or [smallfries3@comcast.net](mailto:smallfries3@comcast.net)  
Bill Borson at 781-449-3481 or [wborson@gmail.com](mailto:wborson@gmail.com)*

Thank you for your support.

## Contributions

The minimum donation for recognition in The Scroll is \$18.00.  
"At birthdays, anniversaries, yahrzeits, etc., support your Temple Fund."

### Rabbi Perlman's Discretionary Fund

<b>Donor</b> David & Amy Kline	<b>In appreciation of</b> Rabbi Perlman for a beautiful baby naming for Annie Kline
Beatrice & Edward Andler Tricia and Scott Sherman	Rabbi Perlman Rabbi Perlman for a beautiful baby naming for Sadie Sherman
<b>Donor</b> Marisa & Jeff Sirlin	<b>In honor of</b> Rabbi Jay Perlman
<b>Donor</b> Ralph & Ina Melen	<b>Speedy recovery</b> Donald Evans
<b>Donor</b> Arnold & Carol Farber Jody & David Loeser Martin & Harriet Yogel Nancy Ravech & Family Anne Riskin Norman & Ruth Stavisky Lois Wallman Jan & Mort Parker Ann & Bob Lurie Ann & Bob Lurie Douglas & Anna Simon Heide Davis & Family The Saltzman Family The Blumenthal/Gallagher Family Robert & Nancy Casper Phyllis & Sumner White Bill, Gena & Zack Borson	<b>In memory of</b> Marilyn Yogel Oscar Melman Zelda Yogel Andler Sara Bello David Riskin Miriam Stavisky Ellie Jacobs Eva Perlmutter Ellie Jacobs William Lurie Norman Simon Bessie Davis Elaine Bernstein Saltzman Jacob Blumenthal Jerome Casper Elizabeth Zalinger Frances Borson

### Rabbi Markley's Discretionary Fund

<b>Donor</b> Jerry Sherman Patti & Louis Grossman	<b>In appreciation of</b> Brotherhood breakfast Rabbi Todd for his loving participation in Ian Samuel's Brit Milah
<b>Donor</b> David & Jody Loeser Anne Riskin The Shuman Family Harvey & Phyllis Katz Liz & Rich Berkman The Saltzman Family The Blumenthal/Gallagher Family Jon & Lori Schaer	<b>In memory of</b> William David Loeser Gilbert LeBlanc Sylvan Herbert Rosenthal Sadie Katz Richard Saletan Jenifer Saltzman Jacob Blumenthal Leon Schnur

### Rabbi Lenke's Discretionary Fund

<b>Donor</b> Sharon Rosenberg	<b>In memory of</b> Reginald Frischling
----------------------------------	--

### Cantor Jonas' Discretionary Fund

<b>Donor</b> Jean & Joe Sands	<b>Speedy recovery</b> Isaac Jonas
----------------------------------	---------------------------------------

### The Chesed Fund

<b>Donor</b> Phyllis & Don Brick	<b>In honor of</b> Rabbi Rifat & Ines Sonsino's 45th Wedding Anniversary
<b>Donor</b> Marlene & Jerry Schultz Margie & Alan Glou Margie & Alan Glou Carol, Jonathan & Dana Kappel Judy Ravech Margie & Alan Glou Rosalyn & Jason Levy & Family Jean & Joe Sands Ina & Ron Glasberg	<b>In memory of</b> Stanley Coleman Maynard Sockol Stanley Coleman Stanley Coleman Stanley Coleman Ellen Zeltserman Edythe Levy, Harold Levy & Gertrude Waldman Ellen Zeltserman Sam Weener

### Children's Center Fund

<b>Donor</b> Tricia, Scott, Sophie & Sadie	<b>In appreciation of</b> Ellen Dietrick
---	---

**Donor**  
TBS Children's Center PTC  
Nelson & Lora Hammer  
Terri Loewenthal  
Roz & Neil Kushner  
Roz & Neil Kushner  
Roz & Neil Kushner  
Lora & Nelson Hammer

**Donor**  
Alyce Simon Sadler  
Mark D. Seltzer  
Joyce & Peter Kaplan & Family  
Joyce & Peter Kaplan & Family  
Terri & Steve Snyder  
Ruth & Shelly Bramson  
Eric & Doreen Leskowitz

**Donor**  
Anita Glickman

**Donor**  
Beth Gamel

**Donor**  
Roberta & Bill Greenberg

**Donor**  
Colleen & Gary Breitbord  
Sheryl & Jim Hirsch  
Sheryl & Jim Hirsch  
Anne Riskin  
The Lustig Family  
The Maremont Family  
Leslie A. Kalish  
Iron Mountain Commercial Contracts

**Donor**  
Sandra & Arthur Mason  
Ralph & Ina Melen

**Donor**  
Monty & Nancy Krieger  
Layne & Jeff Lepes  
Jeff Lepes  
Monty & Nancy Krieger  
Merle & Lester Levenbaum  
Sandy Schneider  
Phyllis & Harvey Katz  
Phyllis & Harvey Katz  
Melvin P. Sacks  
Heide Davis  
Heide Davis

**Donor**  
Marilyn & Bob Brooks  
William Lehman  
Marilyn & Bob Brooks  
Richard Chaffin  
Judi & Marc Kahn

**Donor**  
Jerry Sherman

**Donor**  
Linda & Richard Simon  
Arlene Katzman  
Vera Burtman & Family  
Lois & Ed Raskind  
The Glou Family  
Michael Cohen & Cheryl Weisman-Cohen  
Esther & Arnold Messing  
Dianne & Fred Waldman  
Ina & Ron Glasberg

**In memory of**  
The grandfather of Jocelyn Roth  
Vivian Krafchik  
Sydney Loewenthal  
Stanley Coleman  
Melvin Davis  
Edward Kushner  
Louis Krafchik

### Education Fund

**In memory of**  
Norman Simon  
Norman L. Seltzer  
Irving Kaplan  
Kate Kaplan  
Stanley Coleman  
Max H. Bohrer  
Sidney Leskowitz

### Endowment Fund

**In memory of**  
Aaron Glickman

### Feldman Community Outreach Fund

**In memory of**  
Irving P. Cohn

### General Fund

**In honor of**  
Carly Davis' Bat Mitzvah

**In memory of**  
Stanley Coleman  
Annette Loeser  
Stanley Coleman  
Minnie Kagan  
Philip Lustig  
Jill Fischer Maremont  
Lucille Kline Kalish  
Reginald Frischling

### Richard Todd Sacks Jewish Lifelong Learning Fund

**Donor**  
Sandra & Arthur Mason  
Ralph & Ina Melen

**In honor of**  
Marilyn Proctor  
John Lerner's special birthday

**Donor**  
Monty & Nancy Krieger  
Layne & Jeff Lepes  
Jeff Lepes  
Monty & Nancy Krieger  
Merle & Lester Levenbaum  
Sandy Schneider  
Phyllis & Harvey Katz  
Phyllis & Harvey Katz  
Melvin P. Sacks  
Heide Davis  
Heide Davis

**In memory of**  
I. Jay Krieger  
Maynard Sockol  
Morris Lepes  
Theodore Robbins  
Ann Chernov  
Sam Weener  
Ellen Zeltserman  
Maynard Sockol  
Arthur Goldberg  
Maynard Sockol  
Ellen Zeltserman

### Library Fund

**Donor**  
Marilyn & Bob Brooks  
William Lehman  
Marilyn & Bob Brooks  
Richard Chaffin  
Judi & Marc Kahn

**In memory of**  
Reginald Frischling  
William Lehman  
Harry Goodman  
Miriam Chaffin  
Stanley Coleman

### Music Fund

**Donor**  
Jerry Sherman

**In honor of**  
Jim & Sandy Easley's 40th anniversary

**Donor**  
Linda & Richard Simon  
Arlene Katzman  
Vera Burtman & Family  
Lois & Ed Raskind  
The Glou Family  
Michael Cohen & Cheryl Weisman-Cohen  
Esther & Arnold Messing  
Dianne & Fred Waldman  
Ina & Ron Glasberg

**In memory of**  
Julia Werner  
Godfrey Cohen  
Isadore Crane  
Stanley Coleman  
Eleanor Glou

Louis L. Cohen  
Aaron Buchman  
George Hyde  
Claire Jonas

### Jerry Aransky Passport to Israel Fund

**Donor**  
Hal & Carol Gershman  
Joan & Sheldon Bycoff  
Dianne & Fred Waldman

**In memory of**  
Stanley Coleman  
Louis Sagansky  
Gertrude Waldman

### Amy Sanker Kappel Memorial Fund

**Donor**  
Mark Rosen

**In memory of**  
I. Michael Rosen

### Gersten/Hoisington Memorial Lecture Fund

**Donor**  
Cynthia Levitt

**In honor of**  
The birth of Deborah & Jon Halpert's  
twin granddaughters Alexa & Samara  
Mesicek

**Donor**  
Linda & Allan Gersten  
Linda & Allan Gersten  
Hal & Carol Gershman  
Cynthia Levitt

**In memory of**  
Maynard Sockol  
Freda Gerstenfeld  
Maynard Sockol  
George Hyde

### Ned Saltzberg Memorial Fund

**Donor**  
The Taich Family

**In memory of**  
Nancy Eiseman

### Patti and Louis Grossman Educational Scholarship Fund

**Donor**  
Ina & Ron Glasberg

**In honor of**  
Rabbi Rifat & Ines Sonsino's anniversary

**Donor**  
Jean & David Gumpert  
Ina & Ron Glasberg  
Ina & Ron Glasberg  
Carole & Henry Mittelman  
Carole & Henry Mittelman  
Carole & Henry Mittelman  
The Saltzman Family  
Judy & Jason Chudnofsky  
Judy & Jason Chudnofsky  
Dianne & Fred Waldman  
Dianne & Fred Waldman

**In memory of**  
Otto Sulzberger  
Maynard Sockol  
Stanley Coleman  
Melvin Davis  
Ellie Jacobs  
Stanley Coleman  
Elaine Bernstein Saltzman  
George Hyde  
Reginald Frischling  
Catherine Miller  
Edward Miller

### Prayerbook Fund

**Donor**  
Ina & Ron Glasberg

**In memory of**  
Ellen Zeltserman

### Safety and Security Fund

**Donor**  
Nancy & Jeremy Serwer

**In memory of**  
Florence Cipriano

### Sanctuary Flower Fund

**Donor**  
The Garf Family  
Phil & Shelley Benjamin

**In honor of**  
Madeline Garf becoming a Bat Mitzvah  
David Benjamin becoming a Bar Mitzvah

**Donor**  
Martin & Harriet Yogel & Family  
Vivian & Richard Marson  
Hal & Carol Gershman  
Ina & Ron Glasberg

**In memory of**  
Marilyn F. Yogel  
Lillian Aarons  
Sam Weener  
Carol Stieber

### Sisterhood Oneg Fund

**Donor**  
Bernice Sue Behar

**In appreciation of**  
The amazing Sisterhood Retreat  
Committee

**Donor**  
The Garf Family  
Phil & Shelley Benjamin

**In honor of**  
Madeline Garf becoming a Bat Mitzvah  
David Benjamin becoming a Bar Mitzvah

**Donor**  
Julie & Michael Bailit  
Jennifer & Michael Green  
Julie & Marty Goldberg  
The Martin & Grossman Families  
The Behars  
Sarah & Jamie Fleckner  
Marilyn Lichtman  
Layne Lepes  
The Seidman Family

**In memory of**  
Stanley Coleman  
Stanley Coleman  
Stanley Coleman  
Stanley Coleman  
Stanley Coleman  
Stanley Coleman  
Stanley Coleman  
Stanley Coleman

### Social Action Fund

**Donor**  
Betsy, Eric, Sophia, Ava & Leah Kachel

**In honor of**  
Michael Bailit's special birthday

**Donor**  
The Berez Family  
The Saltzman Family  
The Blumenthal/Gallagher Family  
Terri & Steve Snyder  
Terri & Steve Snyder  
Terri & Steve Snyder

**In memory of**  
William Lowenstein  
Jennifer Saltzman  
Jacob Blumenthal  
Maynard Sockol  
Ellen Zeltserman  
George Hyde

### Torah and Sanctuary Fund

**Donor**  
The Channen Family

**In appreciation of**  
Brotherhood during a difficult time

**Donor**  
Buddy Jacobs

**Speedy recovery**  
Honey Ente

**Donor**  
Marlene & Alan Weinstein  
Buddy Jacobs  
Robert & Sara Smith

**In memory of**  
Melvin Davis  
Stanley Coleman  
David L. Smith

### Youth Fund

**Donor**  
Gail Wasserman

**In honor of**  
David Benjamin's Bar Mitzvah

**Donor**  
Patti & Barry Reiser  
Jean & Joe Sands

**In memory of**  
Gladys "Lally" Seltzer  
Gertrude Landy

*Sharing our Lives*  
*We extend our sympathy to*

Gail and Ron Bor, Alissa and David  
on the passing of their sister and aunt,  
Carol Stieber

Erick and Doreen Leskowitz, Shari and David  
on the passing of their mother and grandmother,  
Thelma Leskowitz

Jeffrey and Cantor Marcie Jonas, Victoria, Saul and Isaac  
on the passing of their mother and grandmother,  
Claire Jonas

Terry and Eric Luskin and Katherine  
on the passing of their mother and grandmother,  
Patricia Lilly Keepnews

המקום ינחם



# rick bern

## PHOTOGRAPHY

Events • Portraits • Commercial



www.rickbernphotography.com  
 info@rickbern.com  
 (617)504-7005

*Mention "TBS Scroll" for a free Family Portrait with your Mitzvah.  
 Our studio is located around the corner from TBS  
 at Gorse Mill, 31 Thorpe Rd Needham, MA*

# Jill C. Kahn

## Realtor



- Topnotch Service to Sellers & Buyers
- 22 year Needham resident
- 14 year elected Needham Town Meeting Member
- Board of Directors, Needham Farmers Market
- TBS member since 2003

Client testimonials at [www.jillkahnrealestate.com](http://www.jillkahnrealestate.com)  
 Call or email for complimentary market analysis  
 617-640-2916 [jill.kahn@nemoves.com](mailto:jill.kahn@nemoves.com)



One Chapel Street, Needham, MA 02492

## Invitations Etc. by Marjorie Golden

Custom Invitations &  
 Accessories for All Occasions

- Reasonable Pricing
- Personal Service
- Quick Turnaround Time

77 Bridle Trail Road  
 Needham, MA 02492

781-400-5514

[www.marjoriegolden.com](http://www.marjoriegolden.com)  
[invitations@marjoriegolden.com](mailto:invitations@marjoriegolden.com)

Partner with Precision

**PRECISION**  
 ESTATE SALES



See seven reasons why  
 Precision Estate Sales is a fit for you.  
 Visit: [www.PrecisionEstateSales.com](http://www.PrecisionEstateSales.com)  
 Or call Arnie Cohen directly at: (781) 223-4635

**Bringing the  
 latest technology,  
 the most efficient work  
 flow, and the highest  
 professionalism to  
 estate sales in  
 Massachusetts.**



## Camp Caribou for Boys Winslow, ME

Providing boys with "Unforgettable Summers"  
 since 1922

3.5 and 7 week sessions for boys ages 7-15

Land sports/Water sports/Wilderness Trips/Professional  
 Sports Instruction/Creative Programming and Fun, all in a  
 warm, nurturing and spirited environment!

[www.campcaribou.com](http://www.campcaribou.com)\*[info@campcaribou.com](mailto:info@campcaribou.com)

Please feel free to contact us toll free at 1-888-305-2267



# Prudential

ADVANTAGE REAL ESTATE

1089 Great Plain Avenue, Needham, MA 02492



Arnold Cohen



Jill Finkelstein



Laura Katz



Jane Migdol



Jennifer Lichtman



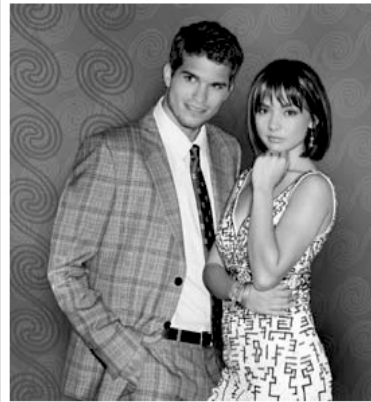
Leslee K. Winston

**AWARD WINNING OFFICE: 2004 - 2010  
FOR EXCELLENCE IN SALES AND SERVICE**

**Call or stop by today and Discover the Advantage!**

**781-444-1234**

[www.PruAdvantageRE.com](http://www.PruAdvantageRE.com)



*Serving the  
Needham  
Community  
for  
over 20  
years*

**\$5 off**

**Any Service  
or Product**

\$15.95 or more



**SUPERCUTS**  
every time

**NEEDHAM**

1299 Highland Ave

781-455-9990

Coupon valid only at participating location. Not valid with any other offer. No cash value. One coupon valid per customer. Present coupon prior to payment. © 2012 Supercuts, Inc. Printed USA. Expires 07/31/12. L68



## Bagels' Best

113 Chapel Street  
Needham, MA 02492

781-433-0003



*Party Platters for Bar/Bat Mitzvahs  
and all occasions.*

**Smoked Salmon Platter**

**White Fish Salad • Tuna Salad • Egg Salad**

**Fresh Fruit Salad**

**Wild Green Salad**

**Pasta Salad • Potato Salad • Vegetable Platter**

**Bagels • Kiddush Challah**



*Our name says it all ... "Quality at a Reasonable Price"*



**growing curiosity.  
challenging minds.**

**Charles River School** prepares students for the 21st century like no other independent school. Curious? We invite you to visit to see how our small school makes such a big difference.

Learn more, schedule a tour.



**CHARLES RIVER SCHOOL**

PREKINDERGARTEN TO GRADE 8

SIX OLD MEADOW ROAD DOVER, MA TEL 508.785.8213  
[WWW.CHARLESRIVERSCHOOL.ORG](http://WWW.CHARLESRIVERSCHOOL.ORG)

Please Support our Advertisers

 **KW Insurance Agency  
AND  
YANOFSKY INSURANCE  
ARE PROUD TO SUPPORT  
TEMPLE BETH SHALOM**



**K.W. SAYS**

**CALL 781-751-9080  
FOR WISDOM  
ABOUT INSURANCE.**

**AUTO · HOME · BUSINESS**

**Or call our Needham office at: 781-449-0611**



Beth Israel Deaconess Hospital  
Needham

Home to a brand new Emergency  
Department and specialty care in  
*your* neighborhood.



148 Chestnut Street  
Needham, MA  
781-453-5400  
[www.bidneedham.org](http://www.bidneedham.org)

**Truly Yogurt & Ice Cream**

We offer delicious ice cream,  
frozen yogurt and  
soft serve.

There is always something  
to satisfy everyone at

**Truly Yogurt**  
with generous portions  
at reasonable prices.

**35 Grove Street**

**Wellesley**

**781-239-1356**

[www.trulyyogurt.com](http://www.trulyyogurt.com)

"2010 Best of Wellesley"

Wellesley Townsman  
Gary Goldman, Owner



**Harvey's  
Hardware**

**"Everything  
In Hardware"**

**1004 Great Plain Ave.  
Needham**

**781-444-4515**

**Great Ways  
to Shop**



**Roche Bros.**

*Your family deserves the best.*

The Supermarket that always offers you the  
freshest quality foods & customer service.



**Roche Bros.**

*Your family deserves the best.*

**HOME COOKING TO GO**

For The Quick Pick-Up Meal



**Roche Bros.com**

home delivery

Easy shopping from the comfort of  
your own home.

Please Support our Advertisers

**One Stop Shopping for Boys & Young Men**  
*We've Suited Up Thousands of Bar Mitzvah Boys!*



**LARGEST SELECTION IN THE GREATER BOSTON AREA!**

Boys Suits from **\$149<sup>90</sup>**  
Boys Blazers from **\$99<sup>90</sup>**  
Free Tailoring Included\*  
SIZES 8-22 REGULAR & HUSKY  
\*BASIC ALTERATIONS

JOSEPH ABOUD • IKE BENAN • HICKEY FREEMAN  
• POLO • ZANIERI & more!

**SIMON & SONS**  
210 Needham Street • Newton, MA • 617-969-8844  
HOURS: Monday, Tuesday, Friday, Saturday 10AM-6PM  
Wednesday & Thursday 10AM-6PM • Sunday 12PM-5PM



**SEGALOFF'S JEWELERS**  
20 Chestnut Street • Needham, Ma. • 781-449-4810  
**Bernie Segaloff** **Cheryl Segaloff**

**WE BUY GOLD** (All Karats • Dental) (Platinum • Silver)  
**\*\*\* We will beat any reasonable offer \*\*\***

**JEWELRY REPAIRS DONE ON PREMISES**  
**SEIKO & ACCUTRON WATCHES ALWAYS 20%-50% OFF**  
**WATCH BATTERIES REPLACED WHILE YOU WAIT**

*Sharon Memorial Park*  
*Pre-need Planning ❖ Interfaith Sections*



*The purchase of cemetery property before need is a wise decision and an act of loving kindness for you and your family.*

Contact: Ira Vogel  
781.828.7216 [www.sharonmemorial.com](http://www.sharonmemorial.com)




**Gary M. Kaufman**  
No Fancy Words  
Just Real Estate Results  
781-444-7555  
[garykaufmanrealtor@gmail.com](mailto:garykaufmanrealtor@gmail.com)  
[www.garykaufmanrealtor.net](http://www.garykaufmanrealtor.net)

- \$60 Million in Sales Representing Buyers and Sellers 2005-2009
- Over 100 Local Real Estate Transactions in the last 60 months
- Massachusetts Licensed Builder/General Contractor



**RE/MAX Home Team**  
339 Chestnut Street, Needham, MA 02492



LYNN WITTMAN, O.D., F.A.A.O.

ONE WASHINGTON STREET, SUITE 101  
WELLESLEY, MA 02481  
tel: 617 332 1471  
fax: 617 332 2735  
cell: 617 365 1103  
[lwittman@newtoneye.com](mailto:lwittman@newtoneye.com)  
[www.visionsource-newtoneye.com](http://www.visionsource-newtoneye.com)



**CHESTNUT DENTAL**  
YOUR SMILE'S IN GREAT HANDS

**NEEDHAM**  
87 Chestnut St.  
Needham, MA 02492  
781.444.6650

**FRANKLIN**  
38 Pond St., Suite 204  
Franklin, MA 02038  
508.520.6660

[www.chestnutdental.com](http://www.chestnutdental.com)

617-365-1870 617-965-4822

**Sandy Presser**  
**Personalized Weight Loss**  
[sipresser@aol.com](mailto:sipresser@aol.com)  
[sandypresserweightloss.com](http://sandypresserweightloss.com)

Please Support our Advertisers

**BREZNIAK RODMAN**  
FUNERAL DIRECTORS

**Graveside Temple Chapel**

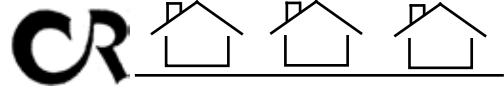
Funeral arrangements made in the convenience  
of your home or our chapel.

Newton: 617-969-0800

Nationwide: 800-554-2199

*Member of National Independent  
Jewish Funeral Directors*

[www.brezniakrodman.com](http://www.brezniakrodman.com)



**Louise Condon Realty, Inc.**  
*"Needham's Home Town Broker"*

**781-449-6292**

Let Us Help You with Your Real Estate Needs

399 Chestnut Street, Needham, MA 02492

See our listings at [www.condonrealty.com](http://www.condonrealty.com)

**Century Bank**

Our family's bank. And yours.

32 Langley Road  
Newton Centre, MA 02459

(617) 641-2300

**Sockol  
Remodeling, Inc.**

**Basements • Bathrooms**

Needham Area  
30 years experience



Jim Sockol  
781.433.9898

**BostonBlinds®**

Custom Window Fashions  
Free In-Home Shopping  
Repair Service

**HunterDouglas**  
*window fashions*

Call John Bulian at  
**(617) 558-7727**

62 Pettee St., Newton Upper Falls  
[www.bostonblinds.com](http://www.bostonblinds.com)

Exceptional  
Service  
Great Prices



**SPORTS & CONCERT  
TICKET DISPLAYS**

**THAT'S MY TICKET**

GET **10% OFF**  
USE COUPON CODE: SHALOM  
[WWW.THATSMYTICKET.COM](http://WWW.THATSMYTICKET.COM)

Please Support our Advertisers



**PINNACLE**  
Residential Properties

**Elyse Marsh, Realtor**  
*For the Pinnacle of Service*

555 Washington Street ♦ Wellesley, Massachusetts 02482  
781.237.5000 office ♦ 617.803.3571 cell  
www.ElyseMarsh.com



**PRINTING**  
IS OUR BUSINESS  
**SERVICE**  
IS OUR SPECIALITY

4 Arlington Road, Needham, MA, 02494  
Tel: **781-449-6100** Fax: **781-449-6112**  
www.printcentre.net info@printcentre.net



**Asset Mortgage Group**

**Loren J. Shapiro**  
lsbapiro@assetmortgage.net  
www.assetmortgage.net

Matn: 508.652.0700 x.103  
Cell: 781.589.5550  
Fax: 508.652.0703

209 West Central Street, Suite 220, Natick, Massachusetts 01760  
Massachusetts License #MC3382



**DESIGN-A-RHYME**

A personalized greeting, what could be better?  
Say it, frame it, or send it in a letter.  
No matter the topic, no matter the dress,  
Make the candle lighting creative, your speech a success.  
For a birthday, anniversary, or any special date,  
Give me the info and I'll never be late.  
Call me and let me give you a lift.  
You will never fear for the perfect gift.  
By appointment Stacy at 617-901-4644

DAVID R. DECTER  
BARBARA A. LEVINE 1952-2011  
PAUL R. LEVINE 1921-2003

CHAPELS  
**LEVINE**

Proudly serving the South Shore, Brookline &  
Metrowest Jewish communities for over 100 years

470 Harvard Street, Brookline, MA 02446  
617-277-8300 • 800-367-3708

A Service Family Affiliate of AFFS and  
Service Corporation International  
206 Winter Street, Fall River, MA 02720  
(508) 676-2454.

WWW.LEVINECHAPELS.COM

Planning parties is  
what we do. Everyday.

Contact us at  
617-964-6550 or at  
www.hopplepopple.com

**HoPPLE  
PoPPLE**

{unique} CEREMONIES & CELEBRATIONS

**TEAM LIEB**



A family serving families with 50 years  
of combined Realtor experience.

**Jeffrey Lieb**, CRS, GRI, ABR  
**Harriet Lieb**, CRS, GRI, ABR

**REALTY**  
**CONSULTANTS**  
*The Key to Satisfaction*

**781-449-3200**

20 Oak Street • Needham, MA 02492 • jefflieb@realtor.com

**Temple Beth Shalom's Inaugural MATZO BALL SOUP OFF!**

**Sunday, April 29 from 4:00 - 6:00 p.m.**

Dig up your favorite recipe – either from home or from your grandmother – and get ready to compete and enjoy a wide variety of Matzo Ball Soup!!

Enjoy the best variety of Matzo Ball Soup TBS members have to offer!



- \* Meet friends and families across the generations! \* Music / Crafts / Fun for all! \* Create a one of a kind recipe book of your favorites to take home! You're the judge! \* FUN FOR THE WHOLE FAMILY!

You'll get to taste many different soups, judge them on a variety of categories!

You might even be part of the Official Award Panel. Compete in the contest or just come to enjoy great soup!

**ENTER AND COMPETE! DO YOU GOT SOUP?!?**

Do you, or someone you know, have the BEST Matzo Ball Soup that everyone needs to try?

Enter to win fun prizes along with the pride of knowing that you have the "best" Matzo Ball Soup at TBS!

Rules and How to Enter YOUR Matzo Ball Soup: (Space is limited. Get your entry in today!)

\* Join yourself, as a family, or pull together a team! \* Choose a team name!

\* Get your recipe together (or call grandma for hers!)

\* Make and bring your soup, along with a ladle (or two) to the event! \* Eat, Serve, and Enjoy!

**THE DETAILS:**

\* Heating trays and Sterno will be provided to keep your soup warm!

\* In order for everyone to get a "taste," we suggest you prepare at least 3 quarts of soup and at least 12 Matzo Balls (sliced into small portions).

\* Additional details will be provided upon receipt of your entry.

**RSVP TO COMPETE:** Send your name (or team name), phone number, and e-mail address to Rich Berkman (TBSMSBO@gmail.com) by Sunday, April 15.

**RSVP TO ATTEND:** RSVP to Rich Berkman (TBSMSBO@gmail.com) by Sunday, April 22.



Address Service Requested

**Temple Beth Shalom**

670 Highland Avenue

Needham, MA 02494

781-444-0077 - Temple Office

781-449-3274 - Fax Number

781-444-0388 - Religious School Office

781-449-3016 - Children's Center

e-mail:tbshalom@tbsneedham.org

www.tbsneedham.org

Member, Union for Reform Judaism;

Affiliated with Synagogue Council

of Massachusetts